



*Planting the Seeds For Our Future*

2020-2021 ANNUAL REPORT

# Planting Seeds Today For A Better Tomorrow



**Executive Director**  
**KARA FABER**

When our office was preparing to launch a new program this past spring, it created an ah-ha moment for me about the work of the Phelps County Community Foundation. Conversations happening today with donors, nonprofit partners, or government officials may result in immediate action, but for the most part, they center on ensuring that future needs are being planned for and ultimately met in Phelps County.

As I reflected further, I realized the quote “To plant a seed today is to believe in tomorrow” perfectly described what PCCF carries out daily.

We plant seeds of education through our new partnership with Dolly Parton’s Imagination Library, which allows Phelps County children ages 0 to 5 to receive a free, age-appropriate book once a month in the mail. By investing in our youngest Phelps County residents’ literacy, we believe that when they enter Kindergarten, the children are ready to learn and excel. Through the nearly 90 scholarship funds held by PCCF, donors have placed their faith in students to achieve their educational goals and ambitions.

Grants offer opportunities for the ideas and dreams of nonprofit organizations or governmental entities to become a reality. A case in point was the grant PCCF made this summer to the City of Holdrege for the new baseball/softball complex in northwest Holdrege. A project that had been on the City’s wish list for years is now closer than ever to being finished, and we look forward to hearing “play ball” at the complex soon.

Through estate planning, donors can make charitable plans today to support the various causes they love and leave a lasting legacy in their community.

At PCCF, our work today may not always be visible, but like a seed, if nurtured, it will thrive, grow, and we will then reap the many rewards of our work — some of which are highlighted in this report.

Take care and be well,

A background image of a hand holding a small green seedling with two leaves, symbolizing growth and care.

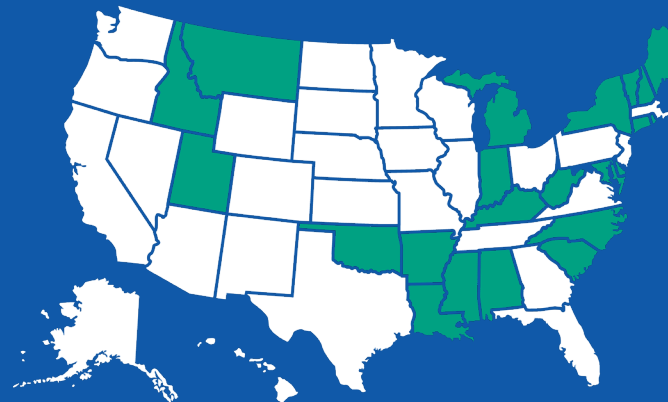
*Kara Faber*



# 2020 give2GROW By The Numbers

## Donors from 28 States

Alaska, Arizona, California, Colorado, Florida, Georgia, Hawaii, Iowa, Illinois, Kansas, Massachusetts, Minnesota, Missouri, North Dakota, Nebraska, New Jersey, New Mexico, Nevada, Ohio, Oregon, Pennsylvania, South Dakota, Tennessee, Texas, Virginia, Washington, Wisconsin and Wyoming



2020 give2GROW donations came from states in white.

## Donors from 53 Nebraska Communities

Albion, Alma, Amherst, Arapahoe, Atlanta, Aurora, Axtell, Bertrand, Blue Hill, Brady, Brule, Bruning, Callaway, Columbus, Doniphan, Edison, Elkhorn, Elm Creek, Elwood, Eustis, Franklin, Fremont, Funk, Gibbon, Grand Island, Gretna, Hastings, Hildreth, Holdrege, Hooper, Huntley, Johnson Lake, Kearney, LaVista, Lexington, Lincoln, Loomis, McCook, Minden, Naponee, North Bend, North Platte, Omaha, Orleans, Overton, Oxford, Scottsbluff, Smithfield, Stamford, Stromsburg, Upland, Wahoo, Wilcox

## 2020 Highlights

As a result of the continuing COVID pandemic, the Phelps County Community Foundation made modifications to give2GROW in 2020 to ensure the health and safety of our donors, board, and staff. In addition to giving online or via check, donors could drop off donations at any of the following Phelps County banks: First State Bank, Holdrege; Great Western Bank; Home Federal Bank; FirstTier Bank; First State Bank, Loomis; First State Bank, Bertrand; or Bruning Bank.

On the day of the event, donors were still able to drop donations off at the PCCF office; however, unlike previous years, the PCCF Board of Directors were not in the building assisting the donors with their gifts. Although this dampened the energy in the building, it did not diminish the impact of give2GROW!

## Matching Funds

PCCF offered a

**\$250,000** match pool, and with additional contributions to the match pool, each organization received a 41% match.

## Total Amount Raised in 2020

**\$859,520**

## 78 Participating Organizations

## Total Raised Since give2GROW Began

**\$6,053,913**

## Top 10 Organizations 2020:

- South Central Area Recovery — \$81,780
- Holdrege Veterans Memorial — \$58,047
- Don Sjogren Community YMCA — \$56,327
- All Saints Catholic School — \$39,513
- Phelps County Historical Society — \$36,077
- Prairie Home Cemetery — \$34,027
- Phelps Community Pantry — \$33,154
- Tassel Performing Arts Center — \$30,200
- Christian Charity Fund — \$29,696
- Holdrege Animal Rescue — \$25,684

# Hendricksons' Home of 60 Years Becomes Seed For Community Betterment

Giving to the Phelps County Community Foundation is a family tradition for Bruce Hendrickson. He recently made a substantial and unique gift to the foundation that will continue to support his hometown community for years to come.

Bruce said PCCF has improved nearly every aspect of life in Phelps County throughout its 45 years, from recreation and arts to safety, education and agriculture.

"I think what the foundation has done for the community is to help us have a better awareness of how the foundation can help improve the community through financial gifts given by generous givers," Bruce said. "All we need to do is take a look at the past 20 years and see the projects the foundation has been involved

with in Phelps County communities. We have a lot to be proud of."

The Hendrickson family has been involved with PCCF since its beginnings in the late 1970s. His father, Carl, served as PCCF's first president and was one of three founding board members along with L.J. (Jo) Titus and Bill Richards. They set up the initial workings of the foundation made possible by a generous estate gift from Irene Anderson

"I've always been very grateful for the foresight and fortitude they had to charter a foundation," Bruce said. "We must always remember that without monetary gifts, the foundation would not exist."

Bruce served as the foundation's third president and has volunteered for PCCF in various capacities over the years.

After Bruce's parents died, he considered how to use some of their assets to continue to benefit the community.

"I came up with the idea to gift to the foundation my parents' residence," Bruce said. "The foundation was able to sell the property and use the funds from the sale to further enhance the foundation's

programs."

Bruce and his wife, Carol, had then discussed doing the same with their home when the time came.

Carol died in 2016. And in 2020, Bruce moved into Chrisoma Villa assisted living. In 2021, he decided it was time to put their plan into action.

"On April 7, 2021, papers were signed transferring our home of 60 plus years to the foundation to help continue its work in the community," Bruce said.

The foundation sold the Hendricksons' home this summer.

Bruce said the proceeds from the sale of his home will go to whatever the board feels is most important. He said the foundation has been good over the years at recognizing needs in the community and giving funds to help meet those needs.

"The future activity and financial growth of the foundation will continue through the dedicated volunteers, generous citizens and people with a vision for the future," he said.





## PCCF Loads Bases With \$250,000 Gift To Holdrege Baseball Complex

The Phelps County Community Foundation granted \$250,000 to the City of Holdrege to continue construction of a new four-field baseball/softball complex in northwest Holdrege.

“PCCF is thrilled to contribute to this project, which will have a lasting impact on not only the future of baseball and softball in our county but provide a boost to the local economy,” PCCF Executive Director Kara Faber said. “The ability to host tournaments in Holdrege will get teams staying in our hotels, eating in our restaurants, shopping in our stores, and most importantly, showcase what an exceptional community Holdrege is.”

This is the second grant from PCCF to the City of Holdrege for the new baseball/softball complex. In 2017, PCCF deeded the last piece of its landbank, approximately 14 acres, to construct the complex.

“This grant will provide a huge boost toward

the completion of this project,” Holdrege City Administrator Chris Rector said. “Currently, we are installing the field lighting and hope to have the drainage system installed this fall. With an additional \$1.2 million still left to fund raise for the cost of the baseball/softball complex, it is anticipated this project will be completed with play beginning in the spring of 2023.”

The City of Holdrege is working with PCCF to establish naming rights for the concession stand, each field, and other possible sponsorship opportunities. Individuals who would like to contribute to this project can donate to the newly established City of Holdrege Parks and Recreation Fund held at PCCF. The fund will allow donors to support the city’s park and recreational facilities, including both the North Park and Veterans Memorial Park, the City Auditorium and future park or recreational additions.



PCCF awarded a \$250,000 grant to the new Holdrege baseball complex this summer. Pictured from left are: Mayor Doug Young, City Administrator Chris Rector, Patti Simpson (PCCF Board Member), Tammy Vonasek (PCCF Board President), Roger Peterson (PCCF Board Member), Rich Krohn (PCCF Board Member), Kara Faber (PCCF Executive Director), Graham Faber (Future Baseball Player)

**In addition to the City of Holdrege Parks & Recreation Fund, PCCF has also established a fund specifically for improvements at Keifer Field at the request of donors.**

## PCCF Plants Seeds For Youngest Residents With Free Book Program

The Phelps County Community Foundation is planting seeds with some of the county's youngest residents by bringing Dolly Parton's Imagination Library to the area.



The program works with partners across the country to gift a free book each month to children up to age 5. More than 150 Phelps County youth are already participating in the program.

“At PCCF we believe in planting seeds, whether it is through grants to our nonprofit partners in the county, awarding scholarships to area students, and now through Dolly Parton's Imagination Library, which we are proud to bring to the children in Phelps County,” PCCF Executive Director Kara Faber said. “This is a good way for us to invest in our little Phelps County residents.”

Phelps County children started receiving their free books in the mail in early June of this year. The first book was “The Little Engine that Could.”

Dolly Parton's Imagination Library is dedicated to inspiring a love of reading by gifting books free of charge to children. Since launching in 1995, Dolly Parton's Imagination Library has become the preeminent early childhood book gifting program in the world. The Imagination Library mails more than 1.7 million high-quality, age-appropriate books each month to registered children from birth to 5 around the world.

Parents or guardians can register their child(ren) through the Imagination Library website or fill out registration forms available on the PCCF website at [www.phelpsfoundation.org](http://www.phelpsfoundation.org).

Visit [www.imaginationlibrary.com](http://www.imaginationlibrary.com) for more information or contact PCCF at 308-995-6847.



**“My son loves getting his Imagination Library books delivered to him each month. His face lights up when he sees the book has his name on it! We are so thankful for this program!”**

**— Audra Peterson, Funk**



## PCCF Nurtures Veterans Memorial & Holdrege Public Library Projects

Sometimes local projects need a little boost to break forth from the ground and sprout.

Recently, the Phelps County Community Foundation has helped two community projects get off the ground.

PCCF serves as the fiscal sponsor for the Holdrege Veterans Memorial and processes all donations and paperwork for veterans' names to appear on the memorial. Working in conjunction with the Holdrege Veterans Memorial Committee and the City of Holdrege, PCCF is pleased to play a role in the success of the project. Construction started in April 2021, and the memorial is expected to be dedicated later this year.

In addition, because the project's fundraising goal was met without a PCCF grant, the PCCF Board of Directors voted to gift a bronze sculpture "Never Forgotten" by Mark and George Lundeen that will be added in phase 2 of the project.

PCCF also has assisted in nurturing the beginnings of a possible library project in Holdrege.

In the fall of 2020, the Holdrege Area Public Library Board of Directors selected a group of

individuals to serve as the Library Planning Committee to conduct a feasibility study to determine the future of the library. The committee hired BVH Architects to analyze the existing library conditions, investigate possible future library sites and prepare a cost analysis report.

During the summer of 2021, the Library Planning Committee educated residents on what a 21st Century library looks like and gathered ideas about the library's future in three community engagement sessions. Residents were also asked to complete a survey about the library.

Kara Faber, PCCF Executive Director, is currently serving as the chairperson for the committee. Wayne Quincy, Fred Diedrichsen, Sue Christensen, Theresa Puls, Heather McQuillan (PCCF Board Member), Tana Fye (Secretary), Stuart Embury, and Dale Herrington also serve on the committee.

At the time of this publication, the Library Planning Committee was awaiting the final community engagement report from BVH. For future updates on the project, visit the Holdrege Area Public Library's website at [www.holdregelibrary.org](http://www.holdregelibrary.org).



**PCCF will gift a Mark & George Lundeen bronze sculpture titled "Never Forgotten" to the Holdrege Veterans Memorial.**





# Gifts Received & Awarded

## Total Gifts & Support Received

Community Impact Fund  
(PCCF's Unrestricted Fund)  
**\$62,192**

Designated Funds  
**\$1,687,353**

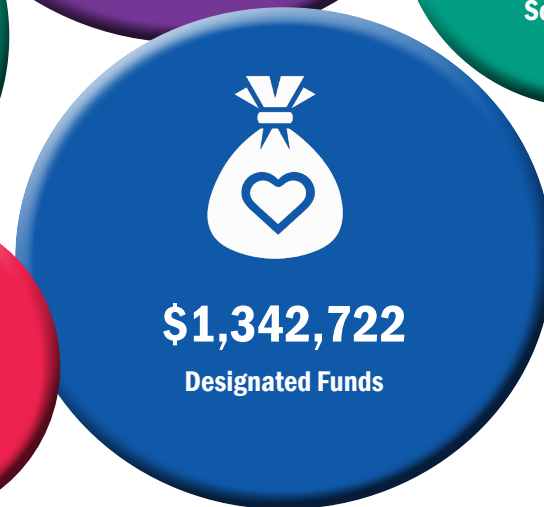
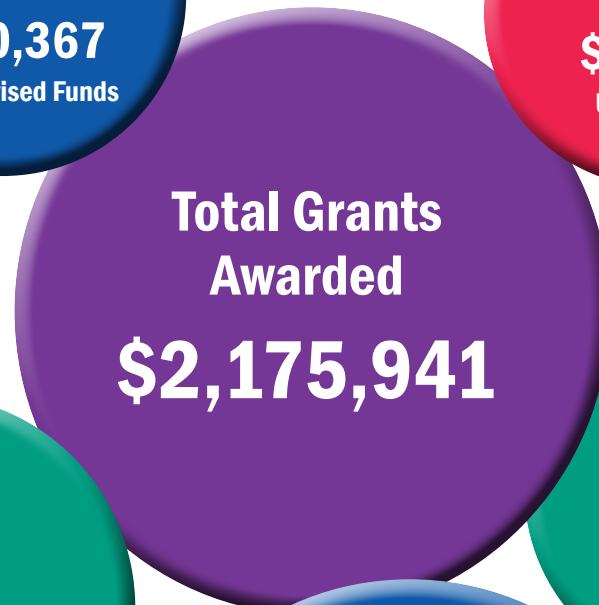
Donor Advised Funds  
**\$176,635**

Field of Interest Funds  
**\$11,747**

Scholarship Funds  
**\$123,321**

Unrestricted Funds  
**\$36,577**

**\$2,097,826**



# Financial Report

## Statement of Financial Position (Audited)

July 1, 2020-June 30, 2021

### CURRENT ASSETS

Cash and Cash Equivalents.....	\$83,687
Investments.....	\$16,789,324
Prepaid Expenses.....	\$18,534
Property & Equipment.....	\$332,628
Other Assets .....	\$7,066,102
<b>TOTAL ASSETS .....</b>	<b>\$24,290,275</b>

### CURRENT LIABILITIES

Accounts Payable.....	\$1,399
Grants Payable .....	\$38,345
Scholarships Payable.....	\$241,725
Other Liabilities .....	\$19,780
Amounts Held for Benefit of Others.....	\$5,858,997

**LONG-TERM LIABILITIES (Scholarships Payable)..... \$71,000**

**TOTAL LIABILITIES..... \$6,231,246**

### NET ASSETS

Without Donor Restrictions .....	\$6,421,043
With Donor Restrictions.....	\$11,637,986
Total Net Assets.....	\$18,059,029

**TOTAL LIABILITIES AND NET ASSETS..... \$24,290,275**

The Phelps County Community Foundation was established in **1976** with a generous gift from the Irene Anderson estate. It is the third oldest community foundation in the state. With aggressive and creative volunteer board members, the foundation grew from assets of **\$300,000** to almost **\$1 million** in the first five years. Today, the foundation has assets of more than **\$24 million**.

# Grants Awarded 2020-21

## PCCF Grants

- **City of Holdrege**  
\$250,000 (to be paid over 5 years for the construction of the new baseball/softball complex)
- **Gosper County Agricultural Society**  
\$10,000 for renovations at the Elwood Civic Center (grant from the Anton Almquist Endowment)
- **Holdrege Area Friends of the Library**  
\$1,500 to restock COVID related personal protective equipment
- **Holdrege Public School**  
\$5,000 for COVID related personal protective equipment for HPS activities
- **Educational Service Unit #11**  
\$3,500 to help fund the Central Nebraska Youth First Conference

## Women's Giving Group Grants

- **LyonHeart Equine Assisted Learning**  
\$1,200 for Phelps County student scholarships to participate in the program
- **Axios Workforce and Talent Development**  
\$2,100 for operational support
- **Phelps County Historical Society**  
\$5,000 for a new digital LED sign at the entrance of the Nebraska Prairie Museum
- **Mid-Nebraska Individual Services**  
\$2,500 to grow the Holdrege Recycling Center's residential program
- **The S.A.F.E. Center**  
\$2,500 to assist in purchasing a vehicle that would allow the S.A.F.E. Center staff to transport clients.



**PCCF awarded a \$2,500 Random Acts of Kindness grant to the Holdrege Police Department in honor of retired Police Chief Dennis DaMoude.**



**PCCF awarded the Gosper County Ag Society \$10,000 to renovate the Elwood Civic Center from the Anton Almquist Endowment Fund.**



# Grants Awarded 2020-21

## Roy W. and Mary L. Pearson Charitable Fund Grants

- Phelps County Agricultural Society  
\$15,000 for leveling and resurfacing of the concrete floor in the Ag Center
- Phelps County Historical Society  
\$15,000 for a new digital LED sign at the entrance of the Nebraska Prairie Museum
- Holdrege Veterans Memorial  
\$25,000 for construction of the memorial in the Veterans Memorial Park
- South Central Area Recovery (SCAR)  
\$25,000 to support the organization's capital campaign
- The Tassel Performing Arts Center  
\$18,520 to support the 2020-21 concert season
- Don Sjogren Community YMCA  
\$3,505 for a seasonal ice rink free to the community



The Women's Giving Group supported the new Axios Workforce & Talent Development program led by Holdrege resident Alex Mahundi. He is pictured here with Loomis High School students.



The Roy W. and Mary L. Pearson Charitable Fund supported the addition of an outdoor seasonal ice skating rink at the Don Sjogren Community YMCA.



# Scholarship Recipients 2021



## Arik Ackerman

Bertrand High School — 2020

Arnold and Olive Wallander  
Memorial Scholarship — \$1,900

*Northeast Community College,  
Utility Line*



## Braden Anderson

Holdrege High School — 2021

DiAnn S. Harris  
Memorial Scholarship — \$1,000

*Creighton University,  
Pre-Med*



## Hope Anderson

Holdrege High School — 2021

Linda Lum Memorial Scholarship — \$1,000  
Youth Golf Scholarship — \$1,500  
William & Margaret Richards — \$2,500  
Ray Ruybalid Memorial Scholarship — \$500  
Bruce Hilsabeck Memorial Scholarship — \$500  
Holdrege Rotary Scholarship — \$1,000  
HHS Class of 1966 Scholarship — \$1,500  
HHS Class of 1965 Scholarship — \$2,000

*UNK, Business Management*



## Landon Anderson

Bertrand High School — 2021

Donald E. Sjogren  
Endowed Scholarship — \$2,000

Ivan & LeonaBelle Kipp Scholarship — \$500

*University of Nebraska-Lincoln, Finance*



## Nathan Anderson

Holdrege High School — 2020

Mike Lane Memorial Scholarship — \$500  
Marty Damrow Memorial Scholarship — \$500  
Phelps County High Demand Jobs — \$4,000  
Curly Geer Scholarship — \$1,000  
Adam Harrahill Memorial Scholarship — \$1,000

*Northeast Community College, Utility Line*



## Tessa Bach

Alma High School — 2021

Delia Brugh Scholarship — \$2,000

*Fort Hays State University,  
Business Administration/Management*



## Jayden Bauer

Wilcox-Hildreth High School — 2021

Parker Sturgis Memorial Scholarship — \$1,000  
LaMonte Woollen Scholarship — \$1,500  
Roger D. Olson Agricultural Scholarship — \$500  
DeLaun Rupkalvis Mem. Scholarship — \$2,500  
Bill Vandell Memorial Scholarship Ag — \$300  
Humpert Memorial Scholarship — \$20,000  
Ron Lush Ag Scholarship — \$1,000

*Southeast Community College Beatrice, Ag*



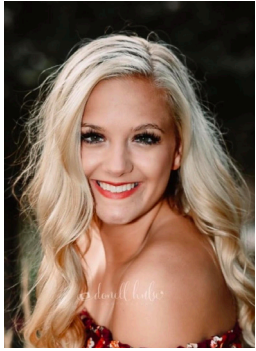
## Nolan Benjamin

Loomis High School — 2020

PCCF College Student Scholarship  
IMO Ivan & LeonaBelle Kipp Loomis — \$1,500

*University of Nebraska at Kearney,  
Elementary Education*

# Scholarship Recipients 2021



## Reagan Bennett

Southern Valley High School — 2021

Clifton and Alberta White  
Memorial Scholarship — \$5,000

BD Holdrege Academic  
Achievement Scholarship — \$2,500

*University of Nebraska at Kearney,  
Early Childhood Education*



## Alexa Berry

Bertrand High School — 2016

PCCF College Student Scholarship - IMO  
Ivan & LeonaBelle Kipp - Bertrand — \$1,500

PMHC Service League Scholarship — \$500

PMHC Miriam Fastenau  
Memorial Scholarship — \$1,000

*University of Nebraska-Lincoln, Speech Therapy*



## Alexis Billeter

Loomis High School — 2021

Phelps County High Demand Jobs  
Scholarship — \$2,000

*Southeast Community College Beatrice,  
Physical Therapy*



## Lance Blythe

Overton High School — 2001

PCCF Nontraditional Student  
Scholarship — \$1,500

*University of Nebraska at Kearney,  
Geography*



## Grace Borden

Holdrege High School — 2021

Holdrege Teammates Scholarship — \$1,000

Holdrege Teammates Ron Uribe  
Memorial Scholarship — \$1,000

Holdrege Teammates Ray Ruybalid  
Memorial Scholarship — \$1,000

*Southeast Community College Beatrice, Ag*



## Carter Bose

Southern Valley High School — 2021

Orleans High School Scholarship — \$500

*University of Nebraska at Kearney,  
Sports Medicine*



## James (Hunter) Brenn

Holdrege High School — 2018

Phelps County High Demand  
Jobs Scholarship — \$1,000

*University of Nebraska-Lincoln,  
Agriculture*



## Trista Callahan

Bertrand High School — 2021

Arnold and Olive Wallander  
Memorial Scholarship — \$1,900

*Southeast Community College Lincoln,  
Dentistry*



## Scholarship Recipients 2021



### **Jarod Cernousek**

Holdrege High School — 2018

Harry & Evelyn Dahlstrom Scholarship — \$1,000

*University of Nebraska at Omaha,  
Cinematography & Film*



### **Madelynn Clausen**

High School Senior — 2021

Donald E. Sjogren Endowed Scholarship, Funk  
Fridhem Lutheran Church Members — \$7,000

*University of Nebraska at Kearney,  
Health Occupations*



### **Caitlin Dahl**

Holdrege High School — 2018

Joan Titus Swan and Jane Waller Titus Memorial  
Scholarship — \$1,000

*University of Nebraska Medical Center  
Kearney Division, Radiology Technician*



### **Kassidy Drain**

Bertrand High School — 2019

Otis E. & Dora P. Mundell Scholarship — \$4,000  
Willis And Alice Holscher Scholarship — \$1,500  
PMHC Service League Scholarship — \$500

*University of Nebraska Medical Center, Nursing*

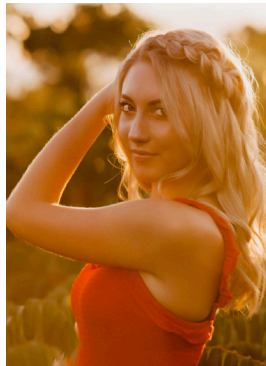


### **Dashton Edgren**

Holdrege High School — 2021

Rod Smith Educational Scholarship — \$1,000

*Chadron State College,  
Secondary Education*



### **Kaela Essex**

Loomis High School — 2021

Skallberg Family Scholarship — \$1,000

*Central Community College, Kearney  
Nursing*



### **Selena Garcia-Laurel**

Holdrege High School — 2021

PCCF Scholarship — \$1,500  
Holdrege High School Class of 1966  
Scholarship — \$1,500

*Clarkson College,  
Nursing*



### **Cora Hastings**

Holdrege High School — 2020

Vincent & Mildred Abrahamson Memorial  
Scholarship - College — \$1,300

*University of Nebraska at Kearney,  
Computer Science*

## Scholarship Recipients 2021



### Alexi Henery

Wilcox-Hildreth High School — 2021

LaMonte Woollen Scholarship — \$1,500  
J. L. Young Memorial Scholarship  
High School — \$500  
BD Holdrege Academic Achievement  
Scholarship — \$3,000

*Southeast Community College Beatrice, Ag*

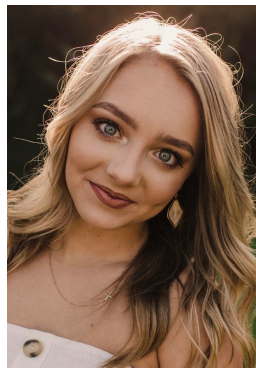


### Kenzie Hurlbert

Holdrege High School — 2020

Holdrege High School Class of 1966  
Scholarship — \$1,500

*University of Nebraska at Kearney,  
Speech Therapy*



### Carly Janssen

Holdrege High School — 2020

Vincent & Mildred Abrahamson Memorial  
Scholarship - College — \$1,300

*University of Nebraska-Lincoln  
Advertising and Marketing*



### Kerigan Karr

High School Senior — 2021

Humpert Memorial Scholarship — \$20,000

*Southeast Community College,  
Early Childhood Education*



### Kloey Kirwin

Holdrege High School — 2020

Vincent & Mildred Abrahamson Memorial  
Scholarship - College — \$1,300

Holdrege High School Class Of  
1966 Scholarship — \$1,500

*University of Nebraska-Lincoln, Biology*



### Abby Klein

Wilcox-Hildreth High School — 2021

J. L. Young Memorial Scholarship  
High School — \$500

*University of Nebraska-Lincoln,  
Health Occupations*



### Jenessa Landin

Holdrege High School — 2021

Phelps County High Demand  
Jobs Scholarship — \$4,000

*University of Nebraska at Kearney,  
Nursing*

Photo  
Not Available

### Lane Lieb

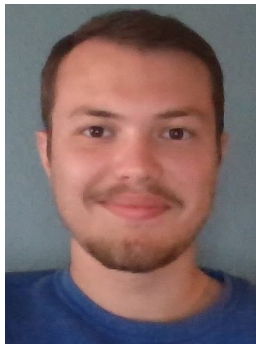
Wilcox-Hildreth High School — 2021

J. L. Young Memorial Scholarship  
High School — \$500

*Concordia University,  
Criminal Justice*



## Scholarship Recipients 2021



### **Tyler McConnell**

Alma High School — 2021

BD Holdrege Academic  
Achievement Scholarship — \$2,500

*Wayne State College,  
Computer Science*



### **Avery Michalski**

Holdrege High School — 2021

Donald E. Sjogren  
Endowed Scholarship — \$2,000

Bill Vandell Memorial Scholarship — \$300

*Wayne State College,  
Medical*



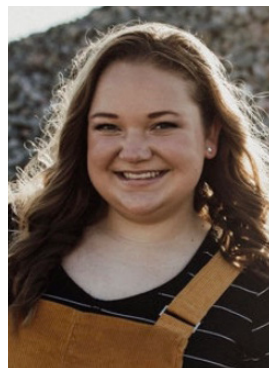
### **Keara Miller**

Holdrege High School — 2019

PCCF College Student Scholarship IMO Ivan &  
LeonaBelle Kipp - Holdrege — \$1,500

Gary W. Kaup Memorial Scholarship — \$1,000

*Palmer College of Chiropractic,  
Chiropractic*



### **Madelyn Moore**

Holdrege High School — 2020

Joan Titus Swan and Jane Waller Titus  
Memorial Scholarship — \$1,000

*Wayne State College, Pharmacy*



### **Cassidy Newth**

Holdrege High School — 2019

RoDonna Harden Memorial Scholarship — \$500  
Howard F. Schroeder Memorial  
Scholarship — \$1,275

*University of Nebraska-Lincoln,  
Elementary Education*



### **Khaleb Pafford**

Loomis High School — 2021

M. J. Nelson Science Scholarship — \$500  
Vincent & Mildred Abrahamson Memorial  
Scholarship - High School — \$1,300  
Walter J. & Elsie E. Stark Memorial Scholarship — \$500  
Donald E. Sjogren Endowed Scholarship — \$2,000  
Forrest and Violet Morrison Leadership  
Scholarship — \$1,000

*UNL, Mechanical Engineering*



### **Karley Patterson**

Bertrand High School — 2021

PCCF Scholarship Bertrand — \$1,500  
Dorothy Swanson Lewis  
Memorial Scholarship — \$1,000

*Chadron State College, Education*



### **Anna Pelton**

Bertrand High School — 2021

Mary Jean Anderson Memorial Scholarship — \$1,000  
Phelps Co. High Demand Jobs Scholarship — \$2,000  
Verner & Mildred Vinzant Scholarship — \$800  
Donald E. Sjogren Endowed Scholarship — \$2,000  
Holdrege Rotary Scholarship — \$1,000  
Ivan & LeonaBelle Kipp Scholarship — \$500  
Emily Swenson Memorial Scholarship — \$20,000  
Harvey E. & Marguerite Sandstrom McDowell — \$1,000  
*Oral Roberts University, Biology*



## Scholarship Recipients 2021



### **Sarah Pelton**

Bertrand High School — 2018

Lenore High Morrison Memorial Scholarship — \$500

Phelps County High Demand

Jobs Scholarship — \$4,000

Bernard and Edith Youngmark Scholarship — \$1,000

Holdrege Memorial Homes Scholarship — \$1,000

*Bryan LGH College of Health Sciences,  
Nursing*



### **Brooke Quadhammer**

Wilcox-Hildreth High School — 2021

Lamoine Johnsen Retired

Employee Scholarship — \$500

Wilcox Area Community

Foundation Scholarship — \$500

Clive E. & Charlotte E. Lantz Scholarship — \$500

*University of Nebraska-Lincoln, Dental Hygienist*

Photo  
Not Available

### **Cassandra Ramsey**

Wilcox-Hildreth High School — 2021

Wilcox Area Community

Foundation Scholarship — \$500

E. L. Lindsay Memorial Scholarship — \$500

*University of Nebraska-Lincoln,  
Business Administration/Management*



### **Hudson Reed**

Holdrege High School — 2021

VFW Post 1365 Agricultural Scholarship — \$350

PT Leland Gaffney Memorial — \$1,000

Robert R. Johnson

Memorial Scholarship — \$1,000

Dr. Marvin Monson Memorial/Holdrege Young

Farmers Scholarship — \$1,000

*Southeast Community College Beatrice, Ag*



### **Joshua Reed**

Holdrege High School — 2021

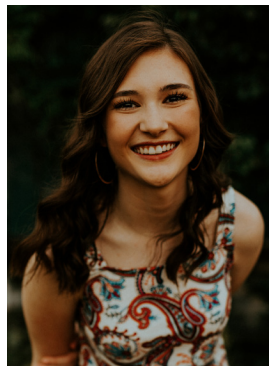
Phelps County High Demand

Jobs Scholarship — \$3,000

Braden Badertscher

Memorial Scholarship — \$1,000

*Southeast Community College Beatrice, Ag*



### **Natalie Reed**

Holdrege High School — 2021

Joan Titus Swan and Jane Waller Titus  
Memorial Scholarship — \$1,000

*University of Nebraska at Kearney,  
Physical Therapy*



### **Noelle Richmond**

Wilcox-Hildreth High School — 2021

BD Holdrege Academic

Achievement Scholarship — \$3,000

*University of Nebraska at Kearney,  
Elementary Education*



### **Jayden Robinson**

Axtell High School — 2021

BD Holdrege Academic

Achievement Scholarship — \$5,000

*Nebraska College of Technical Agriculture,  
Veterinary Medicine*

## Scholarship Recipients 2021



### Abby Scholz

Bertrand High School — 2021

Verner & Mildred Vinzant Scholarship — \$800

Becton Dickinson Technical  
Education Scholarship — \$16,000

Earl & Caroline High Scholarship — \$4,000

*Northeastern Jr. College Sterling, Colorado,  
Ag Business*



### Ian Tomlin

Cambridge High School — 2021

Clifton and Alberta White  
Memorial Scholarship — \$10,000

*University of Nebraska-Lincoln,  
Actuarial Science*



### Karli Vap

Holdrege High School — 2021

Rodney E. Forsberg  
Memorial Scholarship — \$1,900

*University of Nebraska at Kearney,  
Civil Engineering,*



### Caitlynn Wahls

Bertrand High School — 2021

Patrick Family Scholarship — \$1,000

PCCF Scholarship - Loomis — \$1,500

Francis M. Ebmeier Scholarship  
Graduating Senior — \$1,000

*University of Nebraska-Lincoln,  
Pre Med*



### Noah Wilke

Holdrege High School — 2020

Holdrege Teammates Scholarship — \$1,000

*University of Nebraska-Lincoln*



### Taylor Wiser

Holdrege High School — 2021

Jess & Willa Keifer Scholarship — \$1,000

*University of Nebraska-Lincoln,  
Finance*



### Logan Wood

Holdrege High School — 2021

Phelps County High  
Demand Jobs Scholarship — \$4,000

Holdrege Teammates Scholarship — \$1,000

*Southeast Community College-Milford,  
Diesel Technology*

**PCCF awarded 114 scholarships totaling  
\$245,225 to 55 students in 2021.**

**PCCF Scholarship Applications open each year on  
December 1 and are due on February 15.**



## PCCF Staff



**Kara Faber**  
Executive  
Director



**Lacy Chapman**  
Program  
Officer



**Patty Freburg**  
Administrative  
Assistant



**Coral Weeder**  
Program  
Assistant



**Cindy McCormick**  
Executive  
Assistant



**Tana Fye**  
Legal  
Counsel

## PCCF Board of Directors



**Tammy Vonasek**  
PRESIDENT



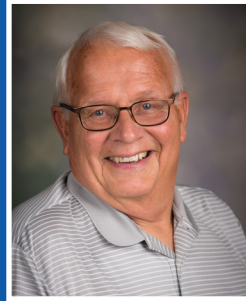
**Carrie Trompke**  
VICE-PRESIDENT



**Charles Reeser**  
TREASURER



**Craig Phillips**  
SECRETARY



**Roger Peterson**



**Luke Thorell**



**Patti Simpson**



**Liz Mattson**



**Heather McQuillan**



**Richard Krohn**



**Cindy Collin**



**Lacie Westcott**

**Phelps County Community Foundation**

424 Garfield | Holdrege, NE 68949 | 308-995-6847 | [www.phelpsfoundation.org](http://www.phelpsfoundation.org)





Phelps County Community Foundation  
424 Garfield Street  
Holdrege, NE 68949



Current Resident Or

**10th Anniversary give2Grow**  
**November 18, 2021!**

Online giving is now open at  
[give2growphelps.org](http://give2growphelps.org)



## OUR MISSION

The mission of the Phelps County Community Foundation is to encourage and provide opportunities for charitable giving, to manage and distribute funds in a responsible manner and to enhance the quality of life for people in Phelps County.