

PHELPS COUNTY COMMUNITY FOUNDATION

RISING UP

2019-2020 ANNUAL REPORT



SUPPORTING RECOVERY AND RESILIENCY

THERE'S NO PLACE LIKE PHELPS COUNTY



**EXECUTIVE DIRECTOR
KARA FABER**

CONTACT INFORMATION

Phelps County Community Foundation
424 Garfield, Holdrege, NE 68949
(308) 995-6847
www.phelpsfoundation.org

As we began preparing this year's Phelps County Community Foundation annual report, assembling highlights and stories of impact was easy. Coming up with a theme for the report and the year was also simple — Rising Up.

Beginning the year with massive flooding throughout our county and ending it with a worldwide pandemic, it is clear Phelps County knows how to rise up and face every challenge head-on with a sense of purpose and community. We take care of one another. We ensure our nonprofit partners thrive through adversity. We support our area youth during uncertain times. We collaborate with others to get the job done. We become creative problem-solvers. We do what Phelps County has always done during hard times — we endure.

In July, when floodwaters inundated the Nebraska Prairie Museum volunteers and community members were quick to rise to the call for help. When the homes of our friends and neighbors suffered flood damage uncovered by their insurance we rose to the task by providing financial assistance to make the situation a little more tolerable. During give2GROW, donors once again made generous gifts to our local organizations in support of their missions and special projects

— rising up with the largest amount raised during give2GROW history.

Then our world turned upside down by COVID-19, and it gave us yet another opportunity to rise up, take action, and show once again the resiliency of Phelps County. The creative ways our communities responded to the challenge was remarkable. Nothing was more moving than to see how we banded together in different ways to support our businesses, organizations, schools, vulnerable populations, and essential personnel.

Every time I used the word we, I'm talking about you. Your continued support of PCCF navigated our county through a year of challenges. You are how the impact shown in this report is possible. You are making the culture of philanthropy in our county both stronger and awe-inspiring.

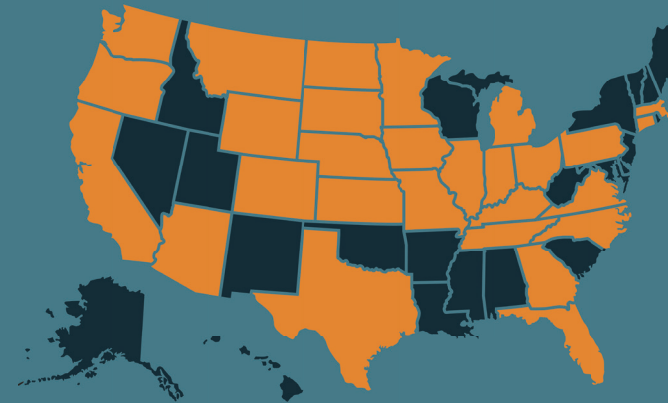
Numerous times I have heard people say there is nowhere else they would want to live during a disaster than Phelps County, and this past year has certainly proved their point. There is no place like our Phelps County.

Take care and be well,

2019 GIVE2GROW — A RECORD YEAR!

Donors from 28 States

Arizona, California, Colorado, Connecticut, Florida, Georgia, Iowa, Illinois, Indiana, Kansas, Kentucky, Massachusetts, Michigan, Minnesota, Missouri, Montana, North Carolina, North Dakota, Nebraska, Ohio, Oregon, Pennsylvania, South Dakota, Tennessee, Texas, Virginia, Washington, Wyoming and District of Columbia



2019 give2GROW donations came from states in orange.

Donors from 59 Nebraska Communities

Utica, Amherst, Holdrege, Lincoln, Elwood, Grand Island, Minden, Atlanta, Stamford, Franklin, Bertrand, Cambridge, Kearney, Loomis, Axtell, Funk, Hildreth, North Platte, Wahoo, Omaha, Wilcox, Edison, Alma, Elk Creek, Gibbon, Gretna, Overton, Fremont, Arapahoe, Papillion, Naponee, Willow Island, Oxford, Gothenburg, Republican City, Blue Hill, Elm Creek, Smithfield, Platte Center, Johnson Lake, Huntley, LaVista, Aurora, Brule, Hastings, Orleans, Doniphan, Shickley, Roca, Ashland, Elkhorn, Lexington, Heartwell, York, Eustis, Scottsbluff, Broken Bow, Cozad, Stromsburg

New Prize for 2019

AgWest Commodities, in celebration of its 20th anniversary, awarded 20 hourly prizes of \$500. Additional incentive prizes were added including prizes for the "Rookie of the Year" (the first-time participating organization raising the most funds), organization with the most pre-scheduled gifts made online, highest number of donors, and biggest percentage increased from the following year. These prizes were made possible by the following sponsors: Enbridge Energy, Central Valley Irrigation, Ryan and Jody Bauer, Cambridge Advisors, Clarke and Mary Kay Nelson, First State Bank, South Central Sanitation, Anonymous, Mary Anna Anderson

Matching Funds

PCCF contributed **\$250,000** in matching funds with each organization beginning the day with \$500.

This is the largest matching funds pool in give2GROW history.

Total Amount Raised
\$892,320

*Record amount in the 8 years give2GROW has been in existence

Top 5 Organizations:

South Central Area Recovery - \$183,742
Phelps County Historical Society - \$61,712
Don Sjogren Community YMCA - \$59,036
Holdrege Veterans Memorial - \$29,552
Prairie Home Cemetery Association - \$29,406

NEW AGENCY FUNDS

When new non-profit organizations seek to raise money, the Phelps County Community Foundation can help by establishing and managing an account where donations can be held. In 2019, two new major funds were established.



VETERANS MEMORIAL FUND

When local residents started planning a new veterans memorial in Holdrege, the Phelps County Community Foundation gave them the boost they needed to get the project rolling.

PCCF partnered with the Holdrege DAV, the City of Holdrege, Palmer Bros. Granite Co., the Phelps County Development Corporation and Holdrege Area Chamber of Commerce to help bring the project to life by volunteering a representative for the steering committee and managing the project's donation fund.

The memorial will be built on the northwest side of the South Park baseball field. It will feature five granite monuments to list area residents who served in the five major branches of the military.

In November 2019, donors gave \$29,552 toward the project in PCCF's give2Grow event. That gave the project a good start to its \$200,000 goal. Since then, the foundation has been accepting donations of \$200 to list a veteran on the monument.

SOUTH CENTRAL AREA RECOVERY FUND

South Central Area Recovery set up an agency fund with the Phelps County Community Foundation in 2019 and participated in give2Grow. Donors gave SCAR \$183,000, making it the highest-grossing project in 2019.

Those donors energized the group's efforts even more to move forward with plans to build and open a new center in Holdrege to help individuals and families struggling with addiction and mental illness. The center will be a hub for anyone seeking recovery, education and healing for any reason.

Michael Leffler, board president for SCAR, said they were "blown away" by the support offered through PCCF and its donors.

"We just could not believe the outpouring of love we got from the community," he said. "It was very encouraging."

The group was originally planning to construct a new building for its center but decided to purchase the former Corner Nugget building in downtown Holdrege when it became available.

Leffler said he is grateful to the foundation for being "integral to our success. It's been an excellent partnership," he said. "The foundation has the resources, recognition, tools and know-how to move us forward."



SCAR Board Members from left: Walter Johnson, Cal Dahlgren, Mindi Young, Mike Leffler, Carrie Lynch, Dean Lynch, Susan Perry (sitting) and Steve Knuth. Not Pictured: Dennis Andersen and Gayleen Maurer.

COVID-19 GRANTS

During the early stages of the COVID-19 pandemic, PCCF partnered with the Phelps County Development Corporation in the Magic Multiplier program. The foundation pledged to match every dollar in gift cards purchased at area businesses with a donation to help area non-profits. As a result, PCCF awarded \$126,653 in COVID-19 Response Grants.

Phelps Community Pantry

\$10,000 to support the pantry's work providing essentials for those in need.

Christian Charity Fund

\$10,000 to support the Christian Charity Fund's mission of assisting those in need with food, household supplies, utility and rent assistance, and other critical requirements.

Bertrand Community School

\$6,450 to purchase medical items and a Pear Deck district license for enhanced virtual learning.

Young at Heart Senior Center

\$2,500 to assist with lost fundraising revenue and the purchase of a thermometer, face masks, gloves, hand soap, hand sanitizer, and surface sanitizer for the building.

Loomis Baseball/Softball Commission and Bertrand Baseball

\$2,225 to cover umpire costs for summer programs due to the inability to have concessions at games.

Holdrege Area Chamber of Commerce

\$12,000 to help cover the costs incurred with credit card processing fees during the Magic Multiplier program, and purchases of PPE and other protective items for the office.

Don Sjogren Community YMCA

\$17,000 to support the Kids Café Free Lunch Program, which saw its number of children served triple this summer.

The Tassel

\$17,500 to assist in off-setting financial shortfalls in the 20-21 season due to COVID-19 and cancellation of performances, and the purchase of PPE.

Loomis Public Schools

\$10,000 to purchase COVID-19 medical items, PPE, and disposable food containers and utensils for the lunchroom.

Holdrege Area Friends of the Library

\$878 for protective plexiglass, sanitizer, and plastic bags for books.

Christian Homes Care Community

\$5,500 to purchase visiting boxes allowing family and friends to safely visit their loved ones and \$5,600 to purchase a door lock system for their staff entrance ensuring the safety of both residents and staff.

All Saints Catholic School

\$27,000 to purchase a reading program, classroom stools, and updates to the computer server room.



ABOVE: PCCF Executive Director Kara Faber gives a Magic Multiplier check to Brad Schneider, owner of Hilsabeck Sporting Goods. PCCF matched donations to local non-profits for every dollar in gift cards purchased. PCDC matched its dollars with grants to businesses, which Kara helped distribute.



LEFT: The YMCA Kids Cafe served nearly 4,000 free meals during its 2020 summer food program.

FLOODING GRANTS

To help local organizations affected by flooding in July 2019, PCCF quickly organized emergency flood relief grants. Although the foundation doesn't typically give to individuals, families affected by the flooding could receive grants through a partnership between the foundation and Community Action Partnership of Mid-Nebraska. PCCF, along with Community Action Partnership, Two Rivers Public Health Department, and Tri-Basin NRD hosted an event on August 15, 2019, where those impacted by flooding could meet with service providers to help with their needs.

Rising Up to Help Neighbors With Flood-Ravaged Homes

July 8, 2019, is a day that Janet Bailey of Holdrege would rather forget.

"I remember the day very vividly," Janet said. "It was awful. I have dealt with three kids with heart conditions. That was nothing compared to the flooding in our house. I have never been so overwhelmed in all my life."

About an hour after she and her husband, Chad, went to bed that night, the lower level of their split-level house began to fill with sewer water. A plugged culvert and a massive rain event created the perfect storm for their house to flood for the first time in the 25 years they have lived there.

Friends and family immediately came to help clean up and remove water, but the damage was already done. The Baileys had to remove two foot of drywall on the entire lower level, replace furniture and other household items, treat all of the wood, clean and sanitize.

A few days later, the Baileys learned that their insurance didn't cover any of the damage.

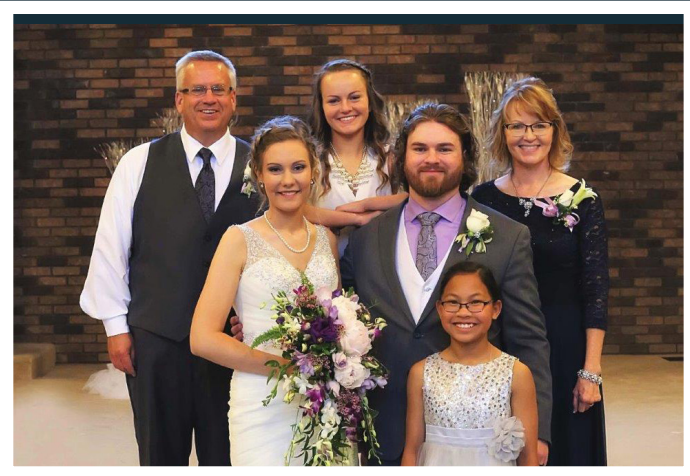
"Then, not only the emotional stress but the financial stress become overwhelming," Janet said.

That's where the Phelps County Community Foundation stepped in. The Baileys applied for and received a \$1,000 grant.

Janet said they were so grateful to everyone in the community who offered support, either through encouraging words, manpower or financial gifts. But, she said the foundation grant was unique in a different way.

"We are so grateful," Janet said. "We had a lot of community support, but the one thing about the foundation grant that stands out to me is that it was funded by donors in the community who didn't know who they would be helping. They didn't know who needed the help but that the need was there. Our community is so just generous and supporting."

The Baileys were one of several Phelps County families who received grants to help recover from the flooding of 2019.



The Bailey Family
Back: Chad, Jenica and Janet
Front: Carolyn, Jacob and Jillian

"We are so grateful. We had a lot of community support, but the one thing about the foundation grant that stands out to me is that it was funded by donors in the community who didn't know who they would be helping. They didn't know who needed the help but that the need was there. Our community is so just generous and supporting."

— Janet Bailey

Stepping Up to Keep A Local Treasure Afloat

*By Micah Huyser, Executive Director
Nebraska Prairie Museum*

Last year, the Nebraska Prairie Museum suffered from an unforeseeable flood.

In half of the museum, we had three to five inches of standing water on the morning of July 9. Fortunately, we had dozens of volunteers throughout the community come and help. We had volunteers pushing water, vacuuming water, and dehumidifiers going non-stop the first couple of days after the flood.

After the standing water was removed, we had hired a commercial dehumidifier unit. The unit was the first major expense of the flood costing nearly \$48,000 up front and nearly \$4,000 a day in electricity, diesel, and man hours.

Once the museum was dry, the next major task was to repair the flooring. We had removed nearly 35,000 square feet of damaged carpet, and we decided to replace the carpet with finished concrete. The flooring overall cost about \$76,000.

With everything said and done, when people ask what it takes to repair a museum of our size after a flood, I say one year and \$200,000.

In times of catastrophe, you really know how great it is to live here in central Nebraska. Of the total bill, we were able to get \$150,000 from fundraisers, grants, and donations.

Most of that money raised came from the Phelps County Community Foundation. The foundation was instrumental in its quick response to the flood, setting up emergency accounts to funnel money to the people that needed it. We were accepted for two grants: the PCCF general grant, and the Pearson Grant.

The remaining money was all thanks to a record-breaking give2GROW fundraiser. I believe we had the most individual contributions to an organization in the history of the foundation. The best thing about the grants, donations, etc. is that it had our emergency funds take less of a beating so they can recover and be available for the next catastrophe.

I know that the museum would have survived regardless of the grants, but the question is not this event but the next. With the grants we received, we can now have that emergency fund for the next generation, much like the museum's philosophy of preservation.

"In time of catastrophe, you really know how great it is to live here in central Nebraska. The foundation was instrumental in its quick response to the flood, setting up emergency accounts to funnel money to the people that needed it."

— Micah Huyser, Museum Executive Director



During the past year, PCCF spent most of its resources helping local non-profits with flooding and pandemic losses. But two regular grants were also awarded: Prairie Home Cemetery Association received a \$4,066 grant for a new mower, and The Tassel was awarded a \$12,174 grant to help purchase a new sound system.

GIFTS RECEIVED AND AWARDED

The numbers on this page represent all gifts received and all grants awarded between July 1, 2019, and June 30, 2020.

Total Gifts & Support

Community Impact Fund
(PCCF's Unrestricted Fund)
\$115,409

Designated Funds
\$1,461,747

Donor Advised Funds
\$154,237

Field of Interest Funds
\$10,948

Scholarship Funds
\$69,462

Unrestricted Funds
\$44,338

\$1,856,141

Total Grants Awarded

\$2,334,149



\$25,600
Unrestricted (1%)



\$338,948
Community Impact (14%)
(Unrestricted Fund)

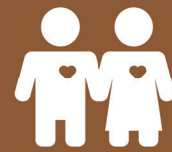
\$160,125
Scholarship (7%)



\$1,621,240
Designated Funds (69%)



\$35,600
Field of Interest (2%)



\$152,635
Donor Advised Funds (7%)

FINANCIAL REPORT

Condensed Statement of Financial Position (Audited)

July 1, 2019-June 30, 2020

CURRENT ASSETS

Cash and Cash Equivalents	\$88,334
Investments	\$14,068,209
Prepaid Expenses	\$5,602
Property & Equipment.....	\$341,024
Other Assets	\$6,548,187
TOTAL ASSETS	\$21,051,356

CURRENT LIABILITIES

Accounts Payable.....	\$1,874
Grants Payable.....	\$42,885
Scholarships Payable.....	\$208,400
Other Liabilities	\$15,953
Amounts Held for Benefit of Others	\$4,939,224
LONG-TERM LIABILITIES (Scholarships Payable)	\$71,000
TOTAL LIABILITIES	\$5,279,336

NET ASSETS

Without Donor Restrictions.....	\$5,935,830
With Donor Restrictions.....	\$9,836,190
Total Net Assets.....	\$15,772,020
TOTAL LIABILITIES AND NET ASSETS.....	\$21,051,356

The Phelps County Community Foundation was established in 1976 with a generous gift from the Irene Anderson estate. It is the third oldest community foundation in the state. With aggressive and creative volunteer board members, the foundation grew from assets of \$300,000 to almost \$1 million in the first five years. Today, the foundation has assets of more than \$21 million.

PCCF LEADERSHIP

BOARD MEMBERS

Robert Olson, President
 Tammy Vonasek, Vice President
 Carrie Trompke, Secretary
 Richard Krohn, Treasurer
 Cindy Collin
 Liz Mattson
 Roger Peterson
 Craig Phillips
 Charlie Reeser
 Luke Thorell
 Patti Simpson
 Lacie Westcott

STAFF LEADERSHIP

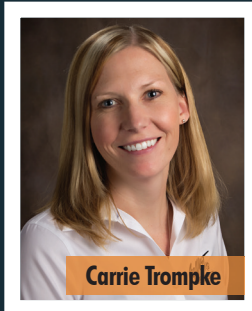
Kara Faber
 Executive Director
 Lacy Chapman
 Program Officer
 Patty Freburg
 Administrative Assistant
 Coral Weeder
 Program Assistant
 Tana Fye
 Legal Counsel



Robert Olson



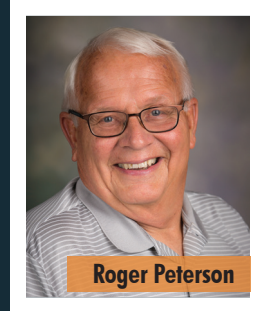
Tammy Vonasek



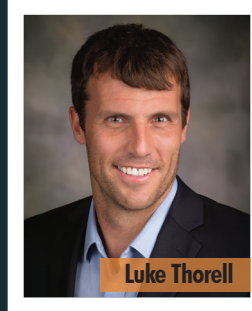
Carrie Trompke



Richard Krohn



Roger Peterson



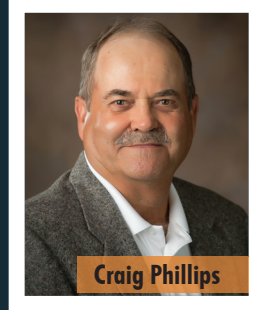
Luke Thorell



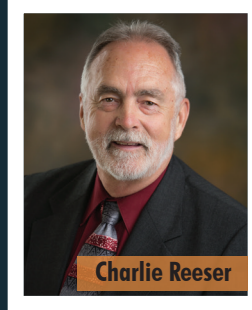
Patti Simpson



Liz Mattson



Craig Phillips



Charlie Reeser



Cindy Collin



Lacie Westcott



Kara Faber



Lacy Chapman



Patty Freburg



Coral Weeder

SCHOLARSHIPS & SENIOR SALUTE



When the COVID-19 pandemic caused schools to close in the spring of 2020, seniors missed out on the last quarter of their high school careers. To spark a little joy for area seniors, PCCF ordered "2020 Graduate" yard signs for each senior in Phelps County. Local teachers volunteered to deliver the signs to their students.

114 scholarships totaling \$201,650 were awarded to 64 students in 2020.

View the 2020 scholarship recipients on the following pages.



New BD Scholarship

PCCF helped BD establish a new scholarship for dependents of employees. The \$8,000 BD Academic Achievement Scholarship will be awarded annually to a dependent of someone employed at BD Holdrege. The recipient must be a graduating senior or have earned a GED and be planning to attend a tech school or a four-year college. The first scholarship will be awarded in 2021.



DID YOU KNOW:
 The Phelps County Community Foundation manages **78** scholarship funds.



Jenna Ackerman

Holdrege High School (2015)
Joan Titus Swan and Jane Waller Titus Memorial Scholarship (\$1,000)
Gary W. Kaup Memorial Scholarship (\$1,000)
Harry & Evelyn Dahlstrom Scholarship (\$1,000)
Creighton University,
Doctor of Occupational Therapy



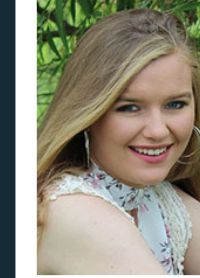
Nathan Anderson

Holdrege High School (2020)
Curly Geer Scholarship (\$1,000)
Adam Harrahill Memorial Scholarship (\$1,000)
PCDC High Demand Jobs Scholarship (\$3,000)
Northeast Community College,
Utility Line



James (Hunter) Brenn

Holdrege High School (2018)
PCDC High Demand Jobs Scholarship (\$1,000)
University of Nebraska-Lincoln,
Animal Science



Jurnee Bruce

Franklin High School (2020)
Humpert Memorial Scholarship (\$10,000)
Southeast Community College,
Radiology Technology



Tyler Badertscher

Holdrege High School (2020)
VFW Post 1365 Agricultural Scholarship (\$300)
Robert R. Johnson Memorial Scholarship (\$1,000)
Southeast Community College,
Agronomy



Ethan Baker

Alma High School (2020)
Delia Brugh Scholarship (\$2,000)
Humpert Memorial Scholarship (\$8,000)
Nebraska College of Technical Agriculture,
Diversified Agricultural Management



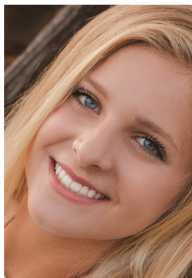
Kristina Cates

Holdrege High School (2001)
PMHC Service League Scholarship (\$500)
Central Community College,
Nursing



Matthew Cedar

Wilcox-Hildreth High School (2014)
Mark Schubert Memorial Scholarship (\$1,000)
Dallas Theological Seminary,
Historical Theology



Baylee Barnett

Holdrege High School (2018)
PCDC High Demand Jobs Scholarship (\$1,000)
University of Nebraska at Kearney,
Health Science, Physician's Assistant



Nolan Benjamin

Loomis High School (2020)
Walter J. & Elsie E. Stark Memorial Scholarship (\$500)
Donald E. Sjogren Endowed Scholarship (\$1,500)
University of Nebraska at Kearney,
Elementary Education



Tehya Cuypers

Holdrege High School (2020)
Rod Smith Memorial Scholarship (\$1,000)
Youth Golf Scholarship (\$1,500)
Midland University,
Secondary Education



Caitlin Dahl

Holdrege High School (2018)
Joan Titus Swan & Jane Waller Titus Memorial Scholarship (\$1,000)
UNMC Kearney Division,
Radiography



Alexa Berry

Bertrand High School (2016)
PMHC Service League (\$500)
PCCF College Student Scholarship
IMO Ivan & LeonaBelle Kipp (\$1,500)
University of Nebraska-Lincoln,
Master's Speech Pathology



Samuel Bojorquez

Bertrand High School (2020)
Public Awareness Scholarship (\$200)
University of Nebraska at Kearney,
Music Education, K-12



Jaden Dannehl

Bertrand High School (2020)
Verner & Mildred Vinzant Scholarship (\$500)
University of Nebraska-Lincoln,
Psychology



Jennica Dannehl

Bertrand High School (2020)
Verner & Mildred Vinzant Scholarship (\$500)
Emily Swenson Memorial Scholarship (\$20,000)
Northeastern Oklahoma A & M,
Agriculture: Equine Option



Brandon Dodson

Bertrand High School (2020)

Arnold and Olive Wallander Memorial Scholarship (\$1,500)

Northeast Community College, Electrical Construction & Control



Carson Fritson

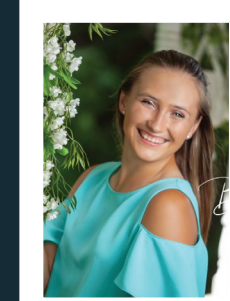
Holdrege High School (2020)

Marty Damrow Memorial Scholarship (\$500)

DiAnn S. Harris Memorial Scholarship (\$1,000)

BD Tech. Education Scholarship (\$16,000)

Central Community College, Hastings, Drafting Technology



Morgan Hein

Holdrege High School (2020)

Holdrege Teammates Scholarship (\$1,000)

Holdrege Teammates Ray Ruybalid Memorial Scholarship (\$1,000)

Wayne State College, Nursing



Jory Holt

Loomis High School (2020)

Mike Lane Memorial Scholarship (\$500)

PCDC High Demand Jobs Scholarship (\$3,000)

Southeast Community College at Milford, John Deere Diesel Technology

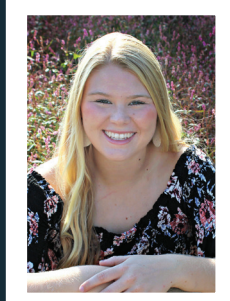


Ava Goosic

Franklin High School (2020)

Humpert Memorial Scholarship (\$10,000)

Chadron State College, Elementary Education



Cailey Grabenstein

Bertrand High School (2020)

Arnold and Olive Wallander Memorial Scholarship (\$1,500)

Colby Community College, Horse Production & Equine Science

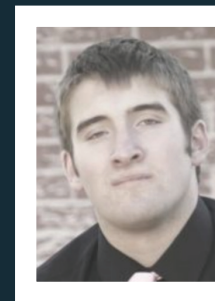


Kenzie Hurlbert

Holdrege High School (2020)

Holdrege High School Class of 1966 Scholarship (\$1,000)

University of Nebraska at Kearney, Communication Disorders



Blaine Hornaman

Holdrege High School (2020)

Public Awareness Scholarship (\$200)

Central Community College in Columbus, Astronomy



Emily Gustafson

Holdrege High School (2020)

Public Awareness Scholarship (\$200)

University of Nebraska-Lincoln, PGA Management



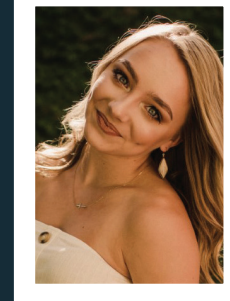
Parker Hamling

Holdrege High School (2020)

Ray Ruybalid Memorial Scholarship (\$500)

Holdrege High School Class of 1966 Scholarship (\$1,000)

University of Nebraska-Lincoln, Architecture



Carly Janssen

Holdrege High School (2020)

Holdrege Rotary Scholarship (\$1,000)

Vincent & Mildred Abrahamson Memorial Scholarship (\$1,300)

Donald E. Sjogren Endowed Scholarship (\$1,500)

University of Nebraska-Lincoln, Marketing



Drake Johnson

Holdrege High School (2019)

PCDC High Demand Jobs Scholarship (\$2,000)

University of Nebraska-Lincoln, Ag Economics



Cora Hastings

Holdrege High School (2020)

M.J. Nelson Science Scholarship (\$500)

Linda Lum Memorial Scholarship (\$1,000)

Vincent & Mildred Abrahamson Memorial Scholarship (\$1,300)

University of Nebraska at Kearney, General Computer Science

PCCF Scholarship Applications open each year on December 1.

The online application can be accessed on the website. The deadline to submit applications is February 15.



Natalie Johnson

Bertrand High School (2020)

Harvey E. & Marguerite Sandstrom McDowell Scholarship (\$500)

PCCF Scholarship - Bertrand (\$1,500)

University of Nebraska-Lincoln, Psychology

Students from 10 high schools received scholarships from PCCF in 2020:

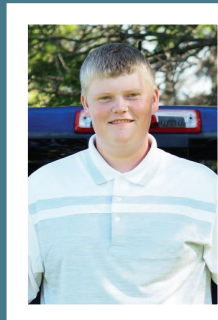
Alma, Arapahoe, Bertrand, Cambridge, Franklin, Holdrege, Loomis, Overton, Southern Valley and Wilcox-Hildreth.



Kloey Kirwin

Holdrege High School (2020)

Mary Jean Anderson Mem. Scholarship (\$1,000)
Jess & Willa Keifer Scholarship (\$1,000)
HHS Class of 1966 Scholarship (\$1,000)
Vincent & Mildred Abrahamson Memorial
Scholarship - High School (\$1,300)
William & Margaret Richards Schol. (\$2,500)
University of Nebraska-Lincoln, Pre-Med



Skye Knaus

Wilcox-Hildreth High School (2020)

Bill Vandell Memorial Scholarship Ag (\$300)
WACF Scholarship (\$500)
Clive E. & Charlotte E. Lantz Scholarship (\$500)
Parker Sturgis Memorial Scholarship (\$1,000)
Ron Lush Ag Scholarship (\$1,000)
LaMonte Woollen Scholarship (\$1,500)
SCC, Agriculture Management & Production



Christianna Marcy

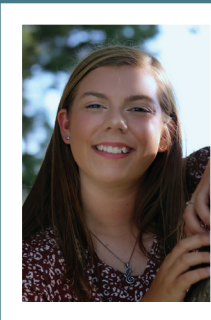
Loomis High School (2018)

PCCF College Student Scholarship,
In Memory Of Ivan & LeonaBelle Kipp -
Loomis (\$1,500)

Dordt University,
Elementary Education, Instructional Strategist

**Top Majors of Study Chosen
by 2020 Scholarship Recipients:**

- Education ● Agriculture ● Music
- Animal Science ● Psychology
- Nursing ● Medical ● Radiology



Nikki Knoell

Holdrege High School (2020)

Rodney E. Forsberg
Memorial Scholarship (\$1,900)

University of Nebraska at Kearney,
Music Education

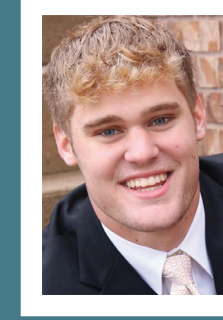


Samantha Kruback

Holdrege High School (2020)

Holdrege Teammates Scholarship (\$1,000)

Central Community College in Columbus,
Associates in Art



Joshua Marcy

Loomis High School (2020)

Forrest & Violet Morrison
Leadership Scholarship (\$1,000)
PCCF Scholarship - Loomis (\$1,500)

University of Nebraska-Lincoln,
Construction Management



Ryan Melroy

Holdrege High School (2020)

Holdrege High School
Class of 1966 Scholarship (\$1,000)

PCCF Scholarship (\$1,500)

University of Nebraska-Lincoln,
Athletic Training



Emma Larson

Loomis High School (2020)

Holdrege Rotary Scholarship (\$1,000)

Donald E. Sjogren
Endowed Scholarship (\$1,500)

University of Nebraska at Kearney,
Undecided



Curtis Layton

Southern Valley High School (2020)

DeLaun Rupkalvis
Memorial Scholarship (\$1,500)

Mid Plains Community College in McCook,
Information Technology

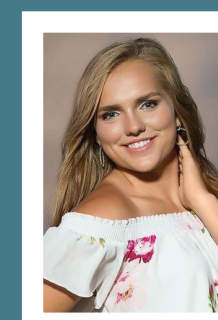


Treven Melroy

Holdrege High School (2020)

Holdrege High School
Class of 1965 Scholarship (\$1,500)

University of Nebraska-Lincoln,
Criminal Justice



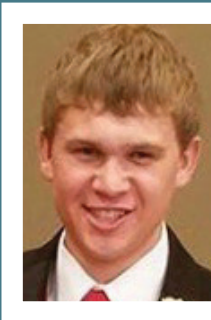
McKayla Meyer

Loomis High School (2019)

Roger D. Olson Agricultural Scholarship (\$500)

PCDC High Demand
Jobs Scholarship (\$3,000)

Central Community College in Hastings,
Ag Business



Greydin Ludeke

Loomis High School (2015)

Atlanta Community Club Scholarship (\$500)

Patrick Family Scholarship (\$1,000)

University of Nebraska at Kearney,
Agribusiness



Kamryn Lynch

Holdrege High School (2020)

PT Arthur Soderholm Jr.
Bowling Scholarship (\$1,000)

University of Nebraska at Omaha,
Music Education



Hadley Milks

Holdrege High School (2020)

Braden Badertscher
Memorial Scholarship (\$1,000)

College of Saint Mary,
Kinesiology

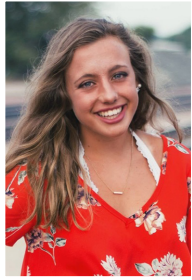


Alyssa Miller

Holdrege High School (2017)

RoDonna Harden Memorial Scholarship (\$500)
PT James Van Marter Mem. Scholarship (\$1,000)
Howard F. Schroeder Mem. Scholarship (\$1,300)
PCCF College Student Scholarship IMO
Ivan & LeonaBelle Kipp - Holdrege (\$1,500)

Fort Hays State University,
Elementary Education, Special Ed Minor



Cassidy Newth

Holdrege High School (2019)

Vincent & Mildred Abrahamson Memorial Scholarship - College (\$1,300)

University of Nebraska-Lincoln, Elementary Education

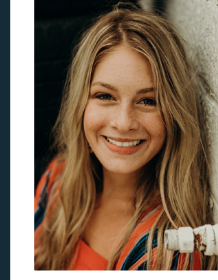


Marc Osantowski

Franklin High School (2020)

Humpert Memorial Scholarship (\$10,000)

Southeast Community College, Electromechanical Technology and Automation Technology



Grace Straight

Bertrand High School (2020)

Ivan & LeonaBelle Kipp Scholarship (\$500)
Skallberg Family Scholarship (\$1,000)
Dorothy Swanson Lewis Memorial Scholarship (\$1,000)
Earl & Caroline High Scholarship (\$4,000)

Hastings Central Community College, Dental Hygiene



Eli Swanson

Holdrege High School (2020)

PT Leland Gaffney Memorial (\$1,000)

PCDC High Demand Jobs Scholarship (\$3,000)

Southeast Community College Milford, Plumbing



RiLee Pascoe

Holdrege High School (2020)

Holdrege Teammates Scholarship (\$1,000)

PCDC High Demand Jobs Scholarship (\$3,000)

Central Community College, Medical Lab Tech



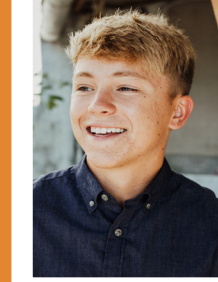
Sarah Pelton

Bertrand High School (2018)

Bernard and Edith Youngmark Scholarship (\$1,000)

Willis and Alice Holscher Scholarship (\$3,000)

Bryan College of Health Sciences, Nursing



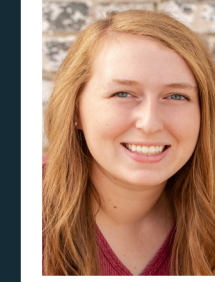
Ethan Twohig

Holdrege High School (2020)

Bill Vandell Memorial Scholarship — Medical (\$300)

Holdrege Memorial Homes Scholarship (\$1,000)

University of Nebraska at Kearney, Athletic Training



Claire VanLaningham

Wilcox-Hildreth High School (2020)

Lamoine Johnsen Retired Employee Scholarship (\$500)

WACF Scholarship (\$500)

E. L. Lindsay Memorial Scholarship (\$500)

University of Nebraska-Lincoln, Secondary English Education



Alex Pistulka

Wilcox-Hildreth High School (2020)

J.L. Young Memorial Scholarship — High School (\$500)

University of Nebraska-Lincoln, Music Education



Rebecca Schulz

Holdrege High School (2017)

Bruce Hilsabeck Memorial Scholarship (\$500)
Lenore High Morrison Memorial Scholarship (\$500)
Joan Titus Swan and Jane Waller Titus Memorial Scholarship (\$1,000)

UNMC - Kearney Division, Nursing



Jacob Wendell

Wilcox-Hildreth High School (2020)

LaMonte Woollen Scholarship (\$1,500)

University of Nebraska-Lincoln, Agronomy



Jordan Wilbur

Holdrege High School (2020)

PCDC High Demand Jobs Scholarship (\$3,000)

Southeast Community College, John Deere Ag Tech



Katrina Peterson Sell

Loomis High School (2019)

Atlanta Community Club Scholarship (\$500)

Central Community College, Accounting/Transfer



Cassandra Shepherd

Arapahoe High School (2009)

PCCF Nontraditional Scholarship (\$1,500)

PCDC High Demand Jobs Scholarship (\$4,000)

Central Community College Kearney, Nursing



Noah Wilke

Holdrege High School (2020)

J. Rowland & Eleanor McClymont Memorial Scholarship (\$4,000)

University of Nebraska-Lincoln, Mechanized Systems Management



Trevor Young

Wilcox-Hildreth High School (2020)

J. L. Young Memorial Scholarship - High School (\$500)

University of Nebraska-Lincoln, Pre-Health

OUR MISSION

The mission of the Phelps County Community Foundation is to encourage and provide opportunities for charitable giving, to manage and distribute funds in a responsible manner and to enhance the quality of life for people in Phelps County.



PHELPS COUNTY COMMUNITY FOUNDATION
424 Garfield Street
Holdrege, NE 68949

Current Resident Or

NONPROFIT
ORGANIZATION
U.S. POSTAGE

PAID

HOLDREGE, NEBRASKA
PERMIT NO. 26

