



Phelps County Community FOUNDATION

Rooted here for good.

2022-2023 Annual Report



Executive Director
KARA FABER

PCCF Launches Updated Brand

On behalf of the Phelps County Community Foundation Board of Directors and staff, I am excited to present to you our 2022-23 annual report. Inside you will find a snapshot of PCCF's year including the grants and scholarships awarded, projects our organization supports, a donor spotlight, and financial reports. Each year as we prepare this report, it is always rewarding to look back at the work we have accomplished, and this year is no exception.

As you may have noticed, PCCF is sporting a new look as we recently launched an updated logo and new tagline – Rooted here for good. Giving a nod to our previous logo, five trees were included to represent the communities in our county as well as growth. The pillar denotes the support PCCF provides to each of the Phelps County communities. Our new tagline



Rooted here for good.

simply expresses PCCF's longevity and permanence in the county as a champion for good.

We remain grateful for the continued support of our donors, community members, and nonprofit partners we work alongside to make Phelps County a great place to live.

Take care and be well,

SAVE THE DATE! 12TH Annual give2GROW THURSDAY, 11.16.23

Amount Raised in 2022

\$1,069,863

86 Participating Organizations

Total Raised Since
give2GROW Began

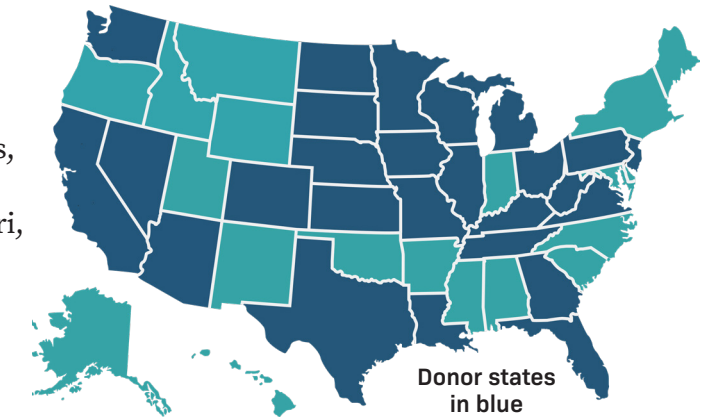
\$8,239,802

TOP 10 ORGANIZATIONS

- Legacy Christian School — \$121,619
- South Central Area Recovery — \$77,839
- Don Sjogren Community YMCA — \$74,928
- Citizens for Bronze Art — \$51,174
- Nebraska Prairie Museum — \$42,718
- Christian Charity Fund — \$37,439
- Holdrege Animal Shelter/Rescue — \$36,910
- Phelps Community Pantry — \$36,266
- Prairie Home Cemetery Assoc. — \$33,436
- Christian Homes Care Community — \$29,829

DONORS FROM 26 STATES!

Arizona, California, Colorado, Florida, Georgia, Iowa, Illinois, Kansas, Kentucky, Louisiana, Michigan, Minnesota, Missouri, Nebraska, Nevada, New Jersey, North Dakota, Ohio, Pennsylvania, South Dakota, Tennessee, Texas, Virginia, Washington, Wisconsin, West Virginia



DONORS FROM 56 NEBRASKA COMMUNITIES

Alma, Atlanta, Ashland, Aurora, Axtell, Beaver City, Bertrand, Brady, Bruning, Cambridge, Columbus, Doniphan, Edison, Elkhorn, Elm Creek, Franklin, Fremont, Funk, Grand Island, Grant, Gresham, Gretna, Gothenburg, Harrisburg, Hastings, Henderson, Holdrege, Huntley, Indianola, Johnson Lake, Kearney, Lawrence, Lincoln, Loomis, McCook, Minden, Naponee, Nebraska City, Nelson, North Platte, Omaha, Orleans, Osceola, Overton, Oxford, Randolph, Red Cloud, Schuyler, Scottsbluff, Sidney, Smithfield, Stamford, York, Wahoo, Wilsonville, Wilcox

2022 GIVE2GROW HIGHLIGHTS

For the 11th annual give2GROW, the Phelps County Community Foundation offered a match pool of \$100,000. In addition to the match pool, participating organizations had the opportunity to win incentive prizes and a \$10,000 endowment courtesy of the PCCF Board of Directors.

THANK YOU TO OUR 2022 MAJOR SPONSORS!



HHS Class of 1966 Gives Back to Hometown

Members of the Holdrege High School Class of 1966 have started a fund at the Phelps County Community Foundation to give back to the community that gave them so much.

“It’s a great goal of ours to help the community that helped us,” Class of 1966 member Cal Olsen said. “We have a lot of people in our class who are generous, and they want to give back.”

In 2022, the Class of 1966 created a field of interest fund with PCCF. The fund allows the class to give donations to the Holdrege community as needed. It will also be part of the 2023 give2GROW event on Nov. 16.

Cal said class members communicate through regular e-mails and through Zoom calls. Through those calls and emails, they determine how they can best help the community with the funds given.

“Our goal is the betterment of life in Holdrege,” Cal said. “Hopefully, we can make a difference.”

The Class of 1966 is a unique class that has stayed connected throughout the years. Cal said the class originally had 120 members. More than 40 of those classmates attended the 2023 reunion, and more than 60 attended the reunion a few years ago.

Cal said many in the class have fond



Forty-six members of the Class of 1966 attended a recent Holdrege High School reunion.

memories of their childhood days in Holdrege, where they spent their summers at the swimming pool, playing baseball and doing art projects at the former South Park.

“I don’t ever remember bullying or that kind of stuff with our class,” Cal said. “I think we didn’t allow it. And that takes leadership from both the boys and girls.”

Cal said their class benefited from excellent teachers in the Holdrege school system throughout their early years.

In 2011, the Class of 1966 started a scholarship fund with the foundation. That fund is now endowed. In 2023, they awarded four \$1,500 scholarships.

The class has also funded landscaping for the Field of Blue bronze sculpture and

benches for the new Ben Franklin sculpture both at the Phelps County Courthouse. Sculptor George Lundeen, who created the two bronzes at the courthouse, is a member of the Class of 1966.

The class also purchased a plaque engraved with the names of those who served their country at the new Holdrege Veterans Memorial and benches at the cemetery. When a classmate dies, the class gives a \$75 memorial to the foundation.

This new field of interest fund will continue the tradition of giving back to the community. The fund accepts donations from anyone, not just those who graduated from with the Class of 1966. Look for an opportunity to give to this new fund during give2GROW 2023.

PCCF Helps Downtown Garden Bloom With Fiscal Sponsorship

In July, the walls came tumbling down on a dilapidated building in downtown Holdrege to make space for a new outdoor art gallery and park called the Midtown Sculpture Garden.

When the idea for the garden first bloomed, the Phelps County Community Foundation made it possible to grow by offering its services as a fiscal agent.

“We sought the foundation’s help to have a credible nonprofit oversee and guide our project,” Midtown Sculpture Garden committee member Vickie Klein said.

“Our board was excited to see their vision and knew we could help out,” PCCF Executive Director Kara Faber said. “That’s why we became the fiscal agent for the project. It will have a huge impact on downtown Holdrege.”

The foundation will accept donations and pay bills on behalf of the garden during the construction phase. Once the project is complete, the City of Holdrege has agreed to take ownership. An endowment will be provided to help with any maintenance costs, which should be low as no grass or plants (other than trees) will be part of the area.

The Midtown Sculpture Garden committee finalized plans and drawings for the garden in early 2023, and Sampson Construction demolished the building at 710 4th Ave. in July. The building had been vacant for years and was structurally unsafe.

The project is expected to cost \$800,000, and more than half of the funds needed have already been raised through private grants and donations.

The project has received a \$100,000 grant from the William and Margaret Richards Endowment Fund and a \$150,000 grant from the Roy W. and Mary L. Pearson Charitable Fund, both held at the Phelps County Community Foundation, and has received more than \$75,000 in grants from other sources.

The garden will feature juniper and shade trees, benches, bronze sculptures and a mural of the wide-open skies of Nebraska. The floor will be constructed of brick pavers to match the look of downtown Holdrege, and string lights above will add to the ambiance. The Midtown Sculpture Garden will be a space that invites residents and visitors to mingle and enjoy art and downtown



Holdrege. The committee envisions people enjoying live music on beautiful summer or fall evenings.

Committee member Sherry McClymont said the project is a chance to show the community some love.

“If they see how much we care about our community, it helps us care about each other,” McClymont said. “Every time we sit back and don’t do something, we miss a great opportunity.”

Midtown Sculpture Garden Committee members are McClymont, Klein, Dr. Stuart Embury, Ted Titus, Dale Herrington and Jessica Kraus.

The Midtown Sculpture Garden will participate in give2GROW on November 16. Anyone interested in donating to the project is encouraged to do so on that day or anytime through PCCF.

The Midtown Sculpture Garden will create an inviting space in downtown Holdrege. It is expected to be completed by the fall of 2024.

CHILDREN CURRENTLY RECEIVING BOOKS

238

CHILDREN GRADUATED FROM PROGRAM

105

To be eligible for Dolly Parton's Imagination Library, children ages five and younger must live at an address with one of the five USPS zip codes in Phelps County. If your child qualifies, scan the QR code below to register online or contact the Phelps County Community Foundation office.



SIGN UP



Recent Imagination Library "graduate" Jayden Connot (photo courtesy of Kelly Connot)

Planting a Love of Reading

The Phelps County Community Foundation continues to be a local program partner with The Dollywood Foundation to bring Dolly Parton's Imagination Library program to the children of Phelps County. Children registered in the program will receive a free age-appropriate book in the mail each month until the time they turn five. The last book a child receives when they "graduate" from the program focuses on preparing them for Kindergarten.

Dolly Parton's Imagination Library was

launched in 1995 and is considered the world's preeminent early childhood book-giving program.

Since its inception, it has mailed over 200 million high-quality, age-appropriate books to children in the United States, Canada, the United Kingdom, The Republic of Ireland, and Australia.

If you are interested in supporting the continuation of Dolly Parton's Imagination Library in Phelps County, you can give to the fund during this year's give2GROW.

Hendricksons Leave Lasting Legacy Through PCCF

During their lifetimes, Bruce and Carol Hendrickson were active in the community and supporters of several nonprofit organizations. Wishing to continue to support organizations near to their hearts in perpetuity, the Hendricksons established an estate plan with the Phelps County Community Foundation. After Bruce's passing in March 2022, PCCF began to receive the planned gifts that have now totaled over \$6.5 million.



Bruce & Carol Hendrickson

"We are truly humbled by the generosity of Bruce and Carol. They were passionate about the Holdrege community and ensuring the community and several organizations serving it were well-positioned for the future including PCCF. It is an honor to carry their legacies into the future," PCCF Executive Director Kara Faber said.

Part of the \$6.5 million gift will be added to the Bruce C. and Carol S. Hendrickson Endowment Fund held at PCCF. This fund annually disperses gifts to support five local organizations: Phelps Memorial Health Center, Phelps County Historical Society, Chapel by the Lake, Holdrege Memorial Homes, and PCCF. The First Presbyterian Church of Holdrege, Holdrege Area Public Library, Christian Homes, and the Holdrege Public Schools Foundation also were beneficiaries of a portion of the estate gifts.

Of the total, the PCCF received \$2.1 million in unrestricted funds, which will be used to support the organization's endowment and future grant making.

Bruce Hendrickson was born in Holdrege and graduated from Holdrege High School. He received a Bachelor of Arts degree in economics from the University of Nebraska-Lincoln. On June 12, 1952, Bruce married Carol Schepman. Bruce served in the U.S. Navy from 1953 to 1956 as a line officer.

In the fall of 1956, Bruce returned to Holdrege to join his father, Carl, as an agent for the Principal Life Insurance Co. Bruce was active in the community serving as a director of the Holdrege Area Chamber of Commerce, past president of the Holdrege City Council, where he served for eight years, and past president of the Holdrege Rotary Club. He served as president of the PCCF and was a loyal volunteer and champion for the organization throughout the years.

Carol (Schepman) Hendrickson was born in Tecumseh, Neb., and graduated from Tecumseh High School. She graduated from the University of Nebraska-Lincoln and taught school at Beatrice and Sterling while Bruce was serving in the U.S. Navy. After moving to Holdrege, she was a substitute teacher for Holdrege Public Schools.

Carol was active in the First Presbyterian Church, Chapter H P.E.O., and the Phelps Memorial Health Center Service League. Carol was a board member of the PMHC, the Nebraska Alumni Association, and a member of the Alpha Chi Omega sorority.

CONTRIBUTIONS RECEIVED BY FUND TYPE

Community Impact Fund (PCCF's Unrestricted Fund)
\$380,543

Designated Funds
\$12,510,991

Donor Advised Funds
\$224,750

Field of Interest Funds
\$69,725

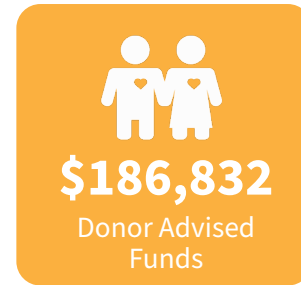
Fiscal Sponsorship
\$339,694

Scholarship Funds
\$40,276

Unrestricted Funds
\$108,954

Total Contributions
\$13,674,934

CONTRIBUTIONS RECEIVED BY FUND TYPE



All gifts received and grants awarded between July 1, 2022, and June 30, 2023

STATEMENT OF FINANCIAL POSITION (AUDITED)

July 1, 2022-June 30, 2023

	2022-23	2021-22
CURRENT ASSETS		
Cash and Cash Equivalents	\$122,047	\$95,106
Investments	\$21,767,827	\$14,848,966
Prepaid Expenses	\$20,047	\$19,276
Property & Equipment	\$317,347	\$321,215
Other Assets	\$7,270,044	\$6,636,854
TOTAL ASSETS	\$29,498,112	\$21,921,417

CURRENT LIABILITIES

Accounts Payable	\$503	\$1,326
Grants Payable	\$78,800	\$18,700
Scholarships Payable	\$211,850	\$269,150
Other Liabilities	\$20,195	\$21,350
Amounts Held for Benefit of Others	\$7,871,743	\$5,827,998

LONG-TERM LIABILITIES

Scholarships Payable	\$79,250	\$74,000
Grants Payable	\$70,000	NA
TOTAL LIABILITIES	\$8,332,341	\$6,212,524

NET ASSETS

Without Donor Restrictions	\$5,096,680	\$5,201,248
With Donor Restrictions	\$16,069,091	\$10,507,645
Total Net Assets	\$21,165,771	\$15,708,893
TOTAL LIABILITIES AND NET ASSETS	\$29,498,112	\$21,921,417

GRANTS AWARDED 2022-23

PCCF GRANTS

City of Holdrege

\$50,000 for new baseball/softball complex

Educational Service Unit #11

\$13,750 for Oculus Pros, support of the Summer Honors program and updated equipment for the annual Quiz Bowl

Holdrege Area Public Library

\$1,895 to support the Summer Reading program

Holdrege High School Class of 1966

Special Projects Fund

\$3,275 for benches and landscaping around the Field of Blue statue on the Phelps County Courthouse lawn

Holdrege Police Department

\$5,450 for WatchDog cameras

Holdrege Public Schools

\$7,447 for a new welder and sewing machines/desks for HHS

Legacy Christian School

\$3,408 for classroom projectors

Loomis Baseball/Softball

\$7,300 for a new batting cage

Loomis Public School

\$8,800 for new pre-school playground equipment

Midtown Sculpture Garden

\$100,000 for construction of the project

Nebraska Prairie Museum

\$6,533 for remodeling of the women's bathroom

The Tassel Performing Arts Center

\$12,000 for program sponsorship

Village of Bertrand/Bertrand Aquatic Center

\$1,160 for swimming pool mats and accessories



Midtown Sculpture Garden Committee: Ted Titus, Sherry McClymont, Vickie Klein, Dr. Stuart Embury, Dale Herrington, Jessica Kraus.

WOMEN'S GIVING GROUP GRANTS

Axios Workforce and Talent Development

\$5,000 for program expansion

Backpack Blessings

\$2,000 for program support

Christian Charity Fund

\$3,000 for program support

LyonHeart Equine Assisted Learning

\$3,500 for Traveling Tails program & scholarships for Phelps Co. kids

Phelps County Historical Society

\$1,500 for updates to the women's bathroom at the Nebraska Prairie Museum

ROY W. & MARY L. PEARSON CHARITABLE FUND GRANTS

Don Sjogren Community YMCA

\$6,500 for the Kids Café

Holdrege Area Chamber of Commerce

\$20,000 for rebranding and community promotion

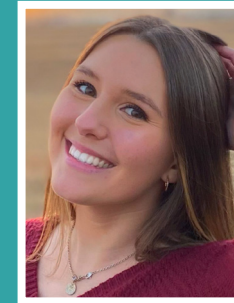
Midtown Sculpture Garden

\$150,000 for construction of the downtown garden

2023 SCHOLARSHIP REPORT

61 STUDENTS — 107 SCHOLARSHIPS — \$212,600 AWARDED!

Congratulations to the 2023 PCCF Scholarship Recipients!



HOPE ANDERSON

Holdrege High School — 2021

HHS Class of 1966 Scholarship — \$1,500

Bruce Hilsabeck
Memorial Scholarship — \$1,500

UNK, Business Admin./Management



BRIANNA ALLOWAY

Wilcox-Hildreth High School — 2023

Humpert Memorial Scholarship — \$4,000

UNO, Criminology



MEGAN BELGUM

Holdrege High School — 2022

Dodee & Tom D. Morris
Art Scholarship — \$750

UNL, Graphic Design



ALEXIS BILLETER

Loomis High School — 2021

Phelps County High Demand
Jobs Scholarship — \$3,000

RoDonna Harden
Memorial Scholarship — \$500

UNL, Elementary Education



LINDEN BISKUP

Alma High School — 2023

Humpert Memorial Scholarship — \$1,000

Doane College, Music Education



MYLES BOGGS

Bertrand High School — 2023

Adam HARRAHIL
Memorial Scholarship — \$1,000

Northeast Community College,
Heating, Ventilation & Air Conditioning

SCHOLARSHIP RECIPIENTS 2023



SAMUEL BOJORQUEZ

Bertrand High School — 2020

Willis & Alice Holscher Scholarship — \$1,500

UNK, History Education 7-12



GRACE BORDEN

Holdrege High School — 2021

Teammates Ron Uribe
Memorial Scholarship — \$1,000

Southeast Community College Beatrice,
Livestock Management & Production

SCHOLARSHIP RECIPIENTS 2023



EMMA DONLEY

Wilcox-Hildreth High School — 2023

J.L. Young Memorial Scholarship — \$500
Wilcox Area Community
Foundation Scholarship — \$500

UNK, Journalism



KASSIDY DRAIN

Bertrand High School — 2019

Lenore High Morrison
Memorial Scholarship — \$1,000
PMHC Service League Scholarship — \$500

Bryan LGH College of Health Sciences, Nursing



NATHAN BRADDY

Wilcox-Hildreth High School — 2023

DeLaun Rupkalvis
Memorial Scholarship — \$2,500
Humpert Memorial Scholarship — \$8,000
Parker Sturgis Memorial Scholarship — \$1,000
CCC Hastings, Automotive Technology



KADEN BROEKER

Holdrege High School — 2022

Curly Geer Memorial Scholarship — \$1,000

Northeast Community College,
Secondary Education



MCCARTNEY ELLIOTT

Holdrege High School — 2022

Phelps County High Demand
Jobs Scholarship — \$2,000

UNK, Pre-Pharmacy



JOHANNA FORD

Bertrand High School — 2022

Earl & Caroline High Scholarship — \$4,000

Oklahoma State University,
Biochemistry & Molecular Biology



CHASE BUNGER

Wilcox-Hildreth High School — 2023

Humpert Memorial Scholarship — \$8,000

Southeast Community College Beatrice,
John Deere Tech



SIERRA BURROWS

Holdrege High School — 2007

PCCF Nontraditional
Student Scholarship — \$1,500
Phelps County High Demand
Jobs Scholarship — \$1,000

UNO, Library Science



JUSTIN GOLUS

Holdrege High School — 2023

Mary Jean Anderson
Memorial Scholarship — \$1,000

South Dakota School of Mines,
Mechanical Engineering



GUNNAR HADLEY

Loomis High School — 2023

PCCF Scholarship Loomis — \$1,500

UNL, Undecided

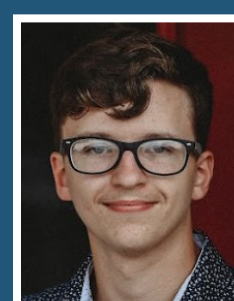


MALACHI CONNELL

Holdrege High School — 2023

Ray Ruybalid Memorial Scholarship — \$500
Skallberg Family Scholarship — \$1,000

UNK, Nursing



DANIEL COOK

Alma High School — 2023

Delia Brugh Scholarship — \$2,000

Doane University, Business Management



DELANEY HAM

Holdrege High School — 2022

Chad Bailey Memorial Scholarship — \$1,000
PCCF College Student Scholarship
IMO Ivan & LeonaBelle Kipp — \$1,500

UNO, Social Work



BLAKE HARVEY

Holdrege High School — 2023

HHS Class of 1966 Scholarship — \$1,500

UNL, Architecture

SCHOLARSHIP RECIPIENTS 2023



EMILY HELWICK

Holdrege High School — 2023

Holdrege Teammates Scholarship — \$1,000

Southeast Community College Milford,
Ultra Sound



JERSIE HERMANSON

Loomis High School — 2023

Patrick Family Scholarship — \$1,000

Phelps County High Demand
Jobs Scholarship — \$5,000

UNK, Radiography

SCHOLARSHIP RECIPIENTS 2023



NIKKI KNOELL

Holdrege High School — 2020

Clifford & Marian Barnes
Memorial Scholarship — \$10,000

UNK, Language Arts Education



JENESSA LANDIN

Holdrege High School — 2021

BD Technical Education Scholarship — \$16,000

Curly Geer Scholarship — \$1,000

Joan Titus Swan & Jane Waller
Titus Memorial Scholarship — \$1,000

Central Comm. College Kearney, Nursing

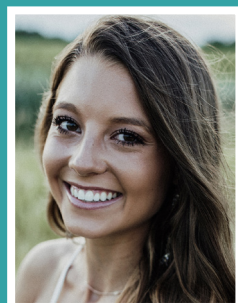


JORDAN HILMER

Bertrand High School — 2022

Willis & Alice Holscher Scholarship — \$1,500

Northeast Community College,
Agri Business



KENZIE HURLBERT

Holdrege High School — 2020

Joan Titus & Jane Waller Titus
Memorial Scholarship — \$1,000

UNK, Communication Disorders



JEREMIAH LOPEZ

Holdrege High School — 2023

Holdrege Teammates Scholarship — \$1,000

Central Community College Hastings,
Autobody



KEARA MILLER

Holdrege High School — 2019

Gary W. Kaup Memorial Scholarship — \$1,000

PMHC Service League Scholarship — \$500

Palmer College of Chiropractic, Chiropractic

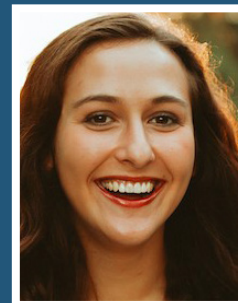


ELLA JACOBSON

Holdrege High School — 2023

Chad Bailey Memorial Scholarship — \$1,000

UNK, Secondary Education/English



JACEY KENT

Cambridge High School — 2023

Clifton & Alberta White
Memorial Scholarship — \$5,000

UNL, English

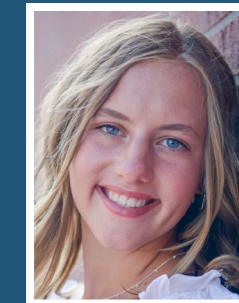


KAZIA NELSON

Axtell High School — 2003

Phelps County High
Demand Jobs Scholarship — \$3,000

Western Governors University,
Elementary Education



CHLOE NEWTH

Holdrege High School — 2023

Nellie Cole Scholarship — \$1,000

Robert R. Johnson Memorial Scholarship \$1,000

VFW Post 1365 Agricultural Scholarship — \$350

Nebraska College of Technical Agriculture,
Veterinary Technology



KLOEY KIRWIN

Holdrege High School — 2020

Harold & Dorothy Marshall Scholarship — \$500

J. Rowland & Eleanor McClymont
Memorial Scholarship — \$4,000

Joan Titus Swan & Jane Waller Titus
Memorial Scholarship — \$1,000

UNL, Biological Sciences



KAELEY KLEIN

Holdrege High School — 2022

Phelps County High Demand
Jobs Scholarship — \$1,000

UNK, Pre-Nursing



CLAIRE ORTGIESEN

Wilcox-Hildreth High School — 2023

Humpert Memorial Scholarship — \$2,000

J.L. Young Memorial Scholarship — \$500

Wayne State College, Pre-Physical Therapy



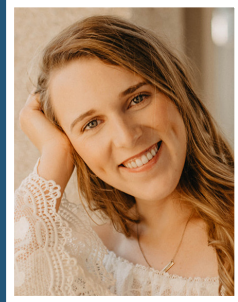
KARLEY PATTERSON

Bertrand High School — 2021

Atlanta Community Club Scholarship — \$500

Chadron State College, Education

SCHOLARSHIP RECIPIENTS 2023



ANNA PELTON

Bertrand High School — 2021

Joan Titus Swan & Jane Waller Titus
Memorial Scholarship — \$1,000

Phelps County High Demand
Jobs Scholarship — \$2,000

Oral Roberts University,
Pre-Occupational Therapy



BRYCE PHILIPS

Bertrand High School — 2022

Phelps County High Demand
Jobs Scholarship — \$5,000

Northeast Community College,
Diversified Agriculture

SCHOLARSHIP RECIPIENTS 2023



ABBY SCHOLZ

Bertrand High School — 2021

Patrick Family Scholarship — \$1,000

PCCF College Student Scholarship
IMO Ivan & LeonaBelle Kipp — \$1,500

West Texas A & M University,
Agricultural Education



LEAH SCHUTZ

Bertrand High School — 2023

Emily Swenson Memorial Scholarship — \$20,000
Skallberg Family Scholarship — \$1,000
Verner & Mildred Vinzant Scholarship — \$800
Clifton & Alberta White
Memorial Scholarship — \$2,000

Nebraska College of Technical Agriculture,
Undecided



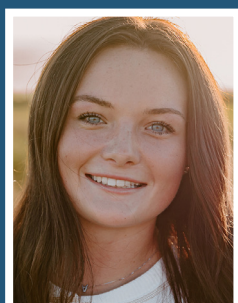
SOPHIA PULS

Holdrege High School — 2023

Bill Vandell Memorial Scholarship — \$300

Roger D. Olson
Agricultural Scholarship — \$500

UNL, Animal Science



SAMANTHA ROACH

Holdrege High School — 2023

HHS Class of 1965 Scholarship — \$2,000
Irene Anderson Scholarship — \$800
Jess & Willa Keifer Scholarship — \$1,000
PCCF Scholarship — \$1,500
William & Margaret Richards
Scholarship — \$2,000

UNK, Finance



HANNA STEWART

Loomis High School — 2022

Atlanta Community Club Scholarship — \$500

UNK, Political Science



HANNA SWEARINGEN

Holdrege High School — 2023

HHS Class of 1966 Scholarship — \$1,500
Phelps County High Demand
Jobs Scholarship — \$3,000
Rod Smith Educational Scholarship — \$1,000

Fort Hays State University,
Elementary Education/Special Ed Minor



TAYLOR ROCHETTE

Franklin High School — 2023

Humpert Memorial Scholarship — \$1,000

UNL, Radiology Technician



SHAELYNN ROEMMICH

Holdrege High School — 2023

Holdrege Firefighters Scholarship — \$2,000

UNO, Pre-Med



ABBY TARR

Wilcox-Hildreth High School — 2023

Humpert Memorial Scholarship — \$4,000
Lamoine Johnson Retired
Employee Scholarship — \$500
Wilcox Area Community Foundation — \$500

UNO, Psychology



WESLEY TROMPKE

Loomis High School — 2023

Forrest & Violet Morrison
Leadership Scholarship — \$1,000
Francis M. Ebmeier Scholarship — \$1,000
Mike Lane Memorial Scholarship — \$1,000

Oklahoma State University,
Professional Pilot Studies



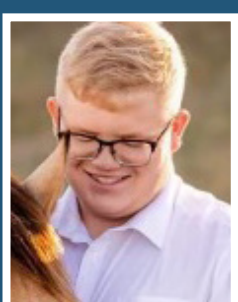
SAMANTHA SCHEMPER

Loomis High School — 2021

PCCF College Student Scholarship IMO Ivan
& LeonaBelle Kipp - Loomis — \$1,500

Walter J. & Elsie E. Stark
Memorial Scholarship — \$500

UNK, Elementary Education



LANE SCHOFF

Bertrand High School — 2023

Dorothy Swanson Lewis
Memorial Scholarship — \$1,000

Concordia University, Agricultural Education



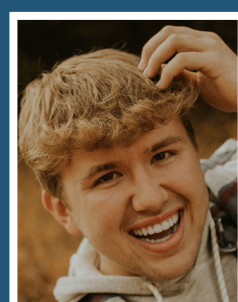
HANNAH VAN CAMPEN

Holdrege High School — 2023

MJ Nelson Science Scholarship — \$500

Holdrege Memorial Homes
Scholarship — \$1,000

Fort Hays State University,
Medical Diagnostic Imaging



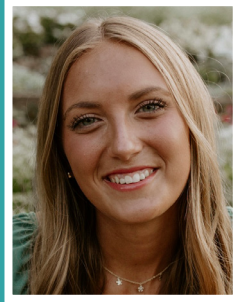
REECE VINZANT

Bertrand High School — 2023

PCCF Scholarship Bertrand — \$1,500
Phelps County High Demand
Jobs Scholarship — \$5,000
Verner & Mildred Vinzant Scholarship — \$800

Chadron State College, Biology

SCHOLARSHIP RECIPIENTS 2023



LORNA WEIDES

Holdrege High School — 2023

Bill Vandell Memorial Scholarship — \$300
Holdrege Rotary Scholarship — \$1,000

UNL, Pre-Health



ALEXANDER WELLS

Holdrege High School — 2018

Harry & Evelyn Dahlstrom Scholarship — \$1,000
Lansing Anderson Scholarship Memorial — \$2,000

Creighton University, Ag & Rural Law



ALEXIS WENGLER

High School — 2023

Humpert Memorial Scholarship — \$4,000

Nebraska College of Technical Agriculture,
Ag Business



ERIKA WILKINS

Holdrege High School — 2022

Marty Damrow Memorial Scholarship — \$500
Youth Golf Scholarship — \$1,000

Northwest Kansas Technical College,
Crime Scene Investigation



BROGAN WISE

Holdrege High School — 2023

PT Leland Gaffney Memorial — \$1,000

CCC Hastings, Autobody Technology



MADISON WOOD

Holdrege High School — 2023

DiAnn S. Harris Memorial Scholarship — \$500
HHS Class of 1966 Scholarship — \$1,500
Teammates Ray Ruybalid Memorial Scholarship — \$1,000
Holdrege Teammates Scholarship — \$1,000
Linda Lum Memorial Scholarship — \$1,000

Fort Hays State University, Interior Design



MACYN YEUTTER

Wilcox-Hildreth High School — 2023

Humpert Memorial Scholarship — \$8,000
J.L. Young Memorial Scholarship — \$500

CCC Hastings, Automotive Technology

The 2024 PCCF scholarship applications open **DECEMBER 1** and are due **FEBRUARY 15**.

Please contact **LACY CHAPMAN** in the PCCF office for more details.

PCCF STAFF



Kara Faber
Executive Director



Lacy Chapman
Associate Director



Patty Freburg
Finance & Operations Director



Shannon Kruback
Administrative Assistant



Cindy McCormick
Executive Assistant



Tana Fye
Legal Counsel

PCCF BOARD OF DIRECTORS



Carrie Trompke
PRESIDENT



Charlie Reeser
VICE-PRESIDENT



Patti Simpson
SECRETARY



Luke Thorell
TREASURER



Roger Peterson



Grace Grove



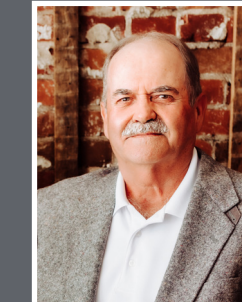
Ted Titus



Liz Mattson



Heather McQuillan



Craig Philips



Cindy Collin



Lacie Westcott

Phelps County Community Foundation

424 Garfield | Holdrege, NE 68949 | 308-995-6847 | www.phelpsfoundation.org



Phelps County Community Foundation

424 Garfield Street
Holdrege, NE 68949

Current Resident Or

OUR MISSION

The mission of the Phelps County Community Foundation is to encourage and provide opportunities for charitable giving, to manage and distribute funds in a responsible manner and to enhance the quality of life for people in Phelps County.

**2023 give2GROW
THURSDAY
NOVEMBER 16!**



**A SPECIAL DAY OF GIVING TO SUPPORT
PHELPS COUNTY CHARITIES!**

Online Giving Now Open at give2growphelps.org