



GOOD GROWS HERE

PHELPS COUNTY COMMUNITY FOUNDATION
2021-2022 Annual Report

Proud to Support Local Visionaries

It is always rewarding when we start to compile the ideas for our annual report, and several times the Phelps County Community Foundation staff will catch ourselves thinking, "I completely forgot we did THAT this year."

This past fiscal year saw us working with several new nonprofit organizations, including Legacy Christian School and Axios Workforce and Talent Development – both are highlighted in this report. It is truly inspiring to work alongside visionary community leaders who see a need in our county and work hard to make it become a reality.

As you will see in our report, PCCF made grants this year for a wide range of projects and programs across our county. It is an honor to help organizations achieve their goals and see the projects PCCF supports come to fruition.

Perhaps the most noteworthy accomplishment of this past fiscal year was the 10th annual give2GROW raising a record-setting \$1.1 million to support our local nonprofits. The energy in the PCCF office when we cleared \$1 million was nothing short of electric, and we look forward to another successful give2GROW on Thursday, November 17.

As always, we remain grateful for the continued support of our donors, community members, and nonprofit organizations we work with to make Phelps County a great place to live.

Take care and be well,

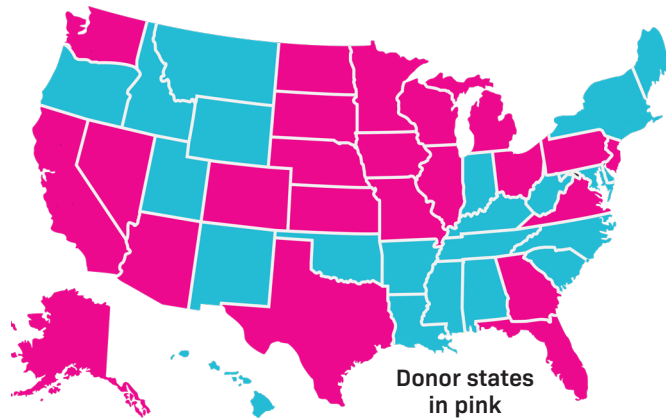


Executive Director
KARA FABER

2021 give2GROW By the Numbers

DONORS FROM 23 STATES!

Alaska, Arizona, California, Colorado, Florida, Georgia, Iowa, Illinois, Kansas, Michigan, Minnesota, Missouri, Nebraska, Nevada, New Jersey, North Dakota, Ohio, Pennsylvania, South Dakota, Texas, Virginia, Washington, Wisconsin



DONORS FROM 54 NEBRASKA COMMUNITIES

Alma, Amherst, Ansley, Arapahoe, Ashland, Atlanta, Aurora, Axtell, Bertrand, Brady, Brule, Bruning, Cambridge, Doniphan, Eddyville, Edison, Elkhorn, Elm Creek, Elwood, Eustis, Franklin, Fremont, Funk, Gothenburg, Grand Island, Hastings, Hildreth, Holdrege, Huntley, Johnson Lake, Kearney, LaVista, Lexington, Lincoln, Loomis, McCook, Minden, Naponee, Nebraska City, North Platte, Omaha, Orleans, Overton, Oxford, Papillion, Red Cloud, Republican City, Scottsbluff, Smithfield, Upland, Wahoo, Waverly, Wilcox, York

2021 GIVE2GROW HIGHLIGHTS

In celebration of the 10th anniversary of give2GROW, the Phelps County Community Foundation offered the largest match pool in history of the event - \$300,000. In addition to the match pool, participating organizations also had the opportunity to win a \$10,000 endowment courtesy of the PCCF Board of Directors.

THANK YOU TO OUR 2021 MAJOR SPONSORS!



SAVE THE DATE!

11TH Annual give2GROW
THURSDAY, 11/17/22

Record Amount Raised in 2021

\$1,116,026

79 Participating Organizations

Total Raised Since
give2GROW Began

\$7,169,939

TOP 10 ORGANIZATIONS

SCAR — \$198,612

Don Sjogren Cmnty. YMCA — \$115,952

Nebraska Prairie Museum — \$47,721

Prairie Home Cemetery — \$44,683

Christian Charity Fund — \$42,611

Phelps Community Pantry — \$35,907

Holdrege Veterans Memorial — \$28,953

All Saints Catholic School — \$28,719

Christian Homes — \$26,949

Holdrege Animal Rescue — \$26,656

PCCF Helps Launch Legacy Christian School

In the fall of 2021, organizers of a new Christian school in Holdrege invited the public to an informational meeting to gauge interest.

One year later, Legacy Christian School opened its doors to nearly 40 students in preschool through fourth grade.

They have an abundance of people to thank for the quick turnaround and the blessing of the school opening, and one of the major helpers has been the Phelps County Community Foundation and Executive Director Kara Faber.

“Kara recognized the potential and what we needed before we even knew what we needed,” Legacy School Board Member Logan Reed said.

Faber attended that first public interest meeting on Aug. 31, 2021. After the meeting, she offered the foundation’s resources and guidance to help launch the school. A few weeks later, the school’s organizers visited with Faber and are grateful for the foundation’s help from the beginning.

Faber advised Legacy organizers on the process of achieving a charitable status and the time it would take (about nine months). In the meantime, she offered to

set up a fund through PCCF to receive donations on behalf of the school until it could obtain its own charitable status.

“That was an absolute lifesaver for us because most people want the tax deduction if they are going to give to a non-profit,” Board Member Ben Loberg said. “That is how the foundation truly helped us get started from Kara being a sounding board and giving us advice to the foundation being our nonprofit to give through.”

The foundation’s support also gave organizers and donors extra confidence in the project.

“The foundation has such a great reputation, and just to say we are part of the foundation and that they are helping us, it added credibility,” Reed said.

Legacy celebrated its first day of school on Aug. 22, 2022, with 21 students in grades K-4 and 17 preschoolers. They employ five full-time and four part-time staff. It is located in the former R-7 school building south of Holdrege. Legacy Christian school received its official certification as a non-profit in late August and will participate for the first time in PCCF’s give2Grow event on November 17. They are hoping for donations to help fund ongoing



building projects and financial aid so that all who want to attend the school will be able to do so regardless of financial situation.

Reed and Loberg said they are grateful for everyone who pitched in to help launch Legacy Christian, including donors and volunteers who helped clean and do construction projects.

“There are so many people who came alongside us,” Loberg said. “We wouldn’t be here today without them. Kara and the foundation are just one of the many people and organizations that made this school possible.”

Legacy Christian School is a non-denominational private Christian school whose purpose is to “equip the next generation in South-Central Nebraska to be godly leaders by partnering with parents to disciple them into a Biblical worldview through challenging academics for the glory of God.”

Grantee Success Story

Grants Expand Reach for Axios Program

Axios Workforce and Talent Development is beginning its third year of helping students discover their potential, and Phelps County Community Foundation grants are helping the non-profit reach even more students.

Most young men and women finish high school or even college with no clear vision for their future. They struggle to understand their gifts or talents. They do not know where they fit in the workforce. Axios equips and mentors students to discover their unique gifts and talents so they can positively impact the community.

PCCF awarded Axios a \$35,000 grant, and the Women's Giving Group awarded the program another \$5,000 grant. In addition, Axios won the \$10,000 endowment prize in the 2021 give2Grow event further boosting the program's impact.

"We live in a great community with a lot of resources," Axios Founder and Director Alex Mahundi said. "We were needing resources to expand to all Phelps County schools and beyond, and the foundation has made that possible."

Axios serves students in grades 8-12 and beyond with career coaching, strength finder

assessments, financial literacy and scholarship education. The program reaches students through schools, small groups or one-on-one coaching. The program is in collaboration with the resources already offered by school guidance counselors and staff.

The program reached 200 students during the 2021-22 school year. It helped connect students to colleges, internships, mentors and local apprenticeships. Axios classes in Loomis helped one student decide between two medical career paths, and she is now attending college to become a surgical tech.

Mahundi invited PCCF Foundation Director Kara Faber to speak to students in Axios classes about scholarship opportunities.

"We noticed with scholarships this year that the schools that had Axios classes, the applications were 10 times better," Faber said. "He is teaching the students about goal setting and the importance of scholarships."

Thanks to the PCCF grants, Axios now has an

office in downtown Holdrege (inside the ruralMED building at 511 West Ave.) so he can offer small group classes and one-on-one counseling. Alex is also a certified Gallup Strengths Coach and can work with both students and adults, including team assessments for organizations and businesses.

During the 2022-23 school year, Axios offers classes at the Holdrege Middle School and Bertrand and Loomis high schools in addition to small group sessions. In the past, he has also worked with Wilcox-Hildreth students and has interest from schools in Southern Valley, Alma, Lexington and beyond.

"I want each student to become the best version of themselves. When I see someone thrive and have joy, it brings me joy."

— Alex Mahundi



Dolly Parton's Imagination Library

Free Program Inspires Love of Reading and Learning

In May 2021, the Phelps County Community Foundation launched Dolly Parton's Imagination Library program for children from birth to age 5 in the county. Each month, children receive an age-appropriate book in the mail free of charge courtesy of PCCF. When the child reaches age 5, the last book they receive is geared toward helping them get ready to start Kindergarten.

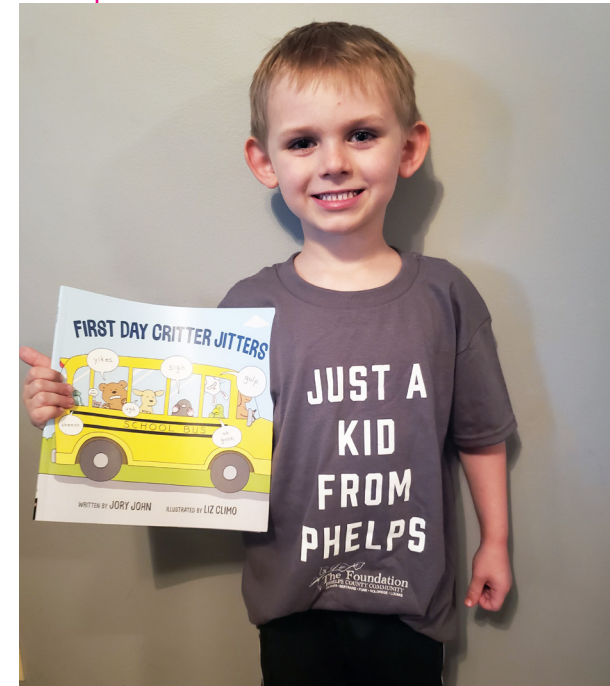


Recently, PCCF began sending birthday cards to all the children in the program along with a gift certificate for a Dairy Queen ice cream cone. Children "graduating" from the program when they turn five receive a t-shirt and card from the Foundation.

To be eligible for Dolly Parton's Imagination Library, children must live at an address with one of the five USPS zip codes in Phelps County. If your child qualifies, scan the QR code at left to register online or contact the Phelps County Community Foundation.

Dolly Parton's Imagination Library is dedicated to inspiring a love of reading by gifting books free of charge to children. Since launching in 1995, Dolly Parton's Imagination Library has become the preeminent early childhood book giving program in the world. It mails more than 1.7 million high quality age-appropriate books each month to children around the world.

CHILDREN CURRENTLY RECEIVING BOOKS: 214
CHILDREN GRADUATED: 50



"Thank you for sponsoring Imagination Library. My son LOVED getting the books in the mail. He especially loved the last one, "First Day Critter Jitters," as it arrived right before he started preschool. We have read it every night since it arrived."

**— Amanda Erickson,
Son, Daxton, pictured above**

Chad Bailey Scholarship

New Scholarship Honors Longtime HHS Teacher

A new PCCF scholarship honors the memory of longtime Holdrege High School teacher Chad Bailey.

Chad taught government and social studies for 31 years starting in Holbrook, Arapahoe and Bertrand and then finishing with 25 years in Holdrege. He also coached football, track, and soccer. In 2018, he was honored as the Outstanding Teacher by the Nebraska State Council for the Social Studies. He retired after the 2020-21 school year. He died on Veterans Day (Nov. 11) 2021.

“Mr. Bailey was gifted in the way he connected with students,” his wife, Janet, said. “He could sense the students who were hurting and struggling, and they were the ones he wanted to support.”

Janet said she initially thought a scholarship would be a fitting tribute to honor Chad’s legacy and his passion for helping kids succeed. After a few others in the community also suggested the idea to her, the scholarship just “fell into place.”

“What better way to continue his legacy than to offer a scholarship that rewards students who want to make a difference,” Janet said.

The Chad Bailey Memorial Scholarship will be available starting in 2023 and will be awarded to a graduating senior or graduate of Holdrege High School planning to enroll full-time at any college, university, technical, or vocational school leading to a degree in education, political science, or public administration. The applicant must have at least a 2.0 GPA on a 4.0 scale and answer the following essay question: Describe a time when you faced a problem or challenge, how you worked

through it, how you included others to help, and what you would do differently the next time.

“Chad set high standards, and his students knew about his standards,” Janet said. “But, that didn’t mean that you had to be a 4.0 student. He loved coming alongside students, especially if that student was the underdog or had a lot of challenges. He loved to encourage them and help them succeed.”

Janet said the essay won’t be judged on grammar or writing perfection but on the content and proof of the applicant’s positive character development.

“Chad wanted to push students to be their best, not just in academics but in character, too,” she said.

Chad began teaching in Holdrege in 1996, and PCCF Executive Director Kara Faber was one of his early students.

“Chad was one of my favorite teachers, and it has been an absolute pleasure to establish this scholarship,” Faber said.

The Chad Bailey Memorial Scholarship was established with memorial funds given after he died. Donors can add more to the scholarship pool during this year’s give2Grow event on Nov. 17. The goal is to offer a \$1,000 scholarship annually with the potential of offering two annual \$1,000 scholarships.



**Chad Bailey,
Former HHS teacher**

Gifts Received & Awarded

All gifts received and grants awarded between July 1, 2021, and June 30, 2022

TOTAL GIFTS & SUPPORT RECEIVED

Community Impact Fund (PCCF's Unrestricted Fund)
\$263,520

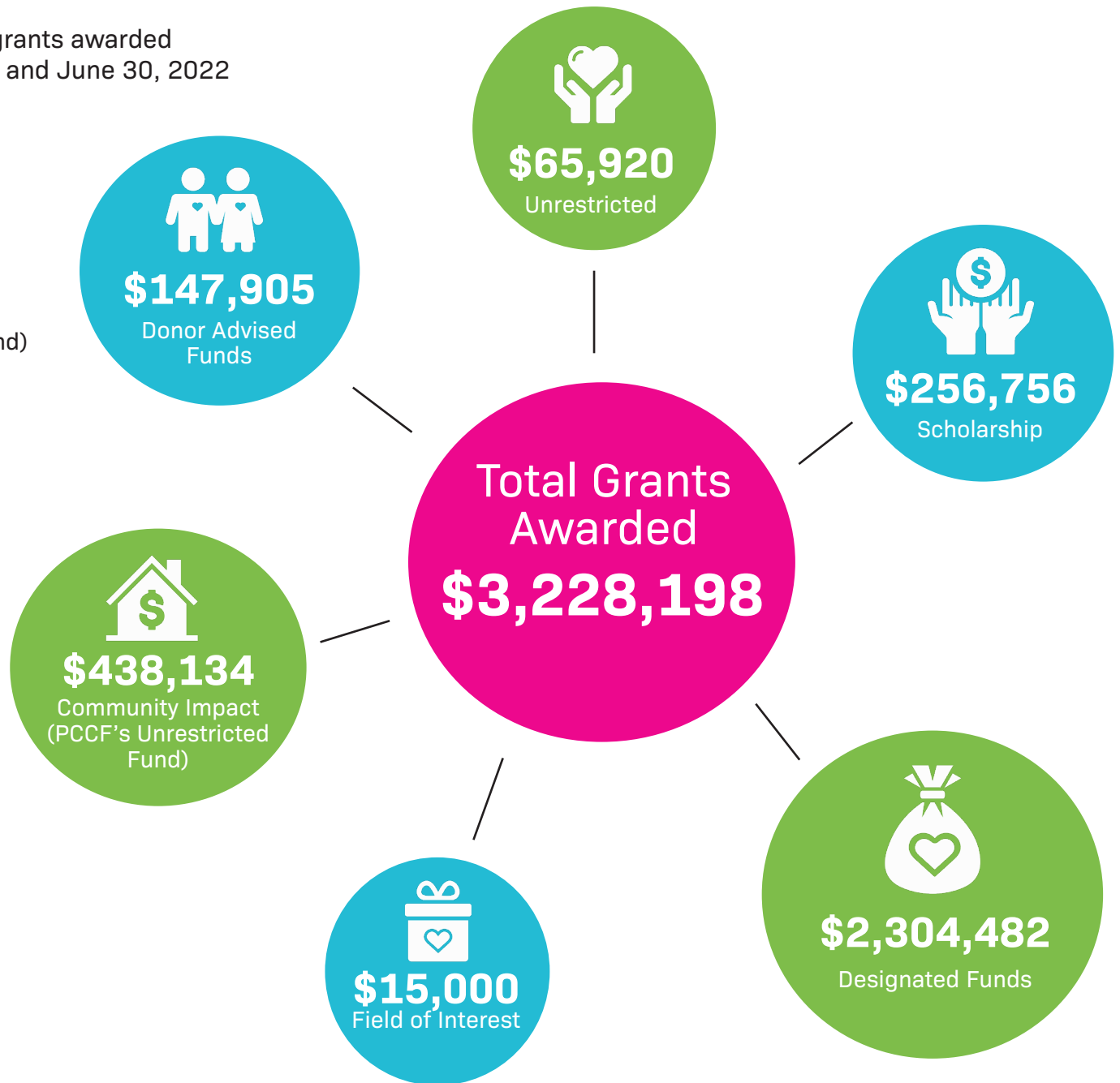
Designated Funds
\$3,129,504

Donor Advised Funds
\$186,141

Field of Interest Funds
\$13,071

Scholarship Funds
\$94,539

Unrestricted Funds
\$122,327



2021-22 Financial Report

Statement of Financial Position (Audited)

July 1, 2021-June 30, 2022

CURRENT ASSETS

| | 2021-22 | 2020-21 |
|--------------------------------|---------------------|---------------------|
| Cash and Cash Equivalents..... | \$95,106 | \$83,687 |
| Investments..... | \$14,848,966 | \$16,789,324 |
| Prepaid Expenses..... | \$19,276 | \$18,534 |
| Property & Equipment..... | \$321,215 | \$332,628 |
| Other Assets..... | \$6,636,854 | \$7,066,102 |
| TOTAL ASSETS..... | \$21,921,417 | \$24,390,275 |

CURRENT LIABILITIES

| | | |
|---|--------------------|--------------------|
| Accounts Payable..... | \$1,326 | \$1,399 |
| Grants Payable | \$18,700 | \$38,345 |
| Scholarships Payable | \$269,150 | \$241,725 |
| Other Liabilities | \$21,350 | \$19,780 |
| Amounts Held for Benefit of Others..... | \$5,827,998 | \$5,858,997 |
| LONG-TERM LIABILITIES (Scholarships Payable) | \$74,000 | \$71,000 |
| TOTAL LIABILITIES..... | \$6,212,524 | \$6,231,246 |

NET ASSETS

| | | |
|--|---------------------|---------------------|
| Without Donor Restrictions..... | \$5,201,248 | \$6,421,043 |
| With Donor Restrictions | \$10,507,645 | \$11,637,986 |
| Total Net Assets | \$15,708,893 | \$18,059,029 |
| TOTAL LIABILITIES AND NET ASSETS..... | \$21,921,417 | \$24,390,275 |

Grants Awarded 2021-22

PCCF GRANTS

Bertrand Aquatic Center

\$32,300 for lights at the new swimming pool

Axios Workforce & Talent Development

\$35,000 for program expansion

Young at Heart Center

\$12,000 for operating expenses

Holdrege Area Chamber of Commerce

\$26,537 for rebranding/community promotion

Don Sjogren Community YMCA

\$5,000 for new bus and after-school/summer camp programs

Holdrege Area Public Library

\$3,800 for laptops and promotion of summer reading program

Phelps County Emergency Management

\$6,000 for drone

Holdrege Police Department

\$17,386 for new in-car and body cameras

Funk School Community Center

\$14,000 for new flooring in gym

Prairie Home Cemetery Association

\$3,300 for new windows and door in cemetery building

Bertrand Ag Society

\$5,000 for new roof on Bertrand Community Center

South Central Area Recovery

\$40,000 for building renovation

City of Holdrege

\$50,000 for new baseball/softball complex
(part of \$250,000 grant for the project)



Bertrand Aquatic Center — \$32,300



Holdrege Area Chamber of Commerce — \$26,537



Phelps Co. Emergency Management — \$6,000

Grants Awarded 2021-22

WOMEN'S GIVING GROUP GRANTS

Funk School Community Center

\$1,000 for building improvements

LyonHeart Equine Assisted Learning

\$1,500 for program scholarships for Phelps County students

South Central Area Recovery

\$400 for building signage

Holdrege Optimist Club

\$1,300 for accessible picnic table by splash pad/inclusive playground at North Park

ROY W. AND MARY L. PEARSON CHARITABLE FUND GRANTS

Don Sjogren Community YMCA

\$7,000 for new bus and \$6,500 for Kids Cafe program

Holdrege Area Public Library

\$4,800 for new laptops

Prairie Home Cemetery Association

\$3,500 for new windows and door at cemetery building



SCAR — \$40,400



YMCA — \$18,500



AXIOS — \$35,000

Scholarship Recipients 2022

HOPE ANDERSON

Holdrege High School — 2021

HHS Class of 1966 Scholarship — \$1,500
PCCF College Student Scholarship IMO Ivan
& LeonaBelle Kipp — \$1,500

UNK, Business Admin./Management



TRACE ANDERSON

Holdrege High School — 2022

PCCF Scholarship Holdrege — \$1,500
Linda Lum Memorial Scholarship — \$1,000
HHS Class of 1965 Scholarship — \$500

Wayne State College, Architecture



KAYLEE BAKER

Alma High School — 2022

DeLaun Rupkalvis Memorial Scholarship — \$2,500
Delia Brugh Scholarship — \$2,000

*Southeast Community College Beatrice,
Ag Business*

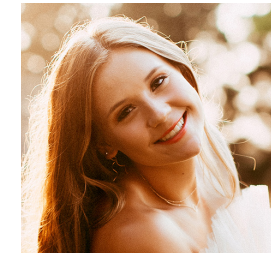


MEGAN BELGUM

Holdrege High School — 2022

Vincent & Mildred Abrahamson
Memorial Scholarship — \$1,500
Jess & Willa Keifer Scholarship — \$1,000

UNL, International Business



ALEXA BERRY

Bertrand High School — 2016

Phelps County High Demand Jobs — \$6,000
PMHC Miriam Fastenau
Memorial Scholarship — \$1,000
PMHC Service League Scholarship — \$500

*University of Nebraska-Lincoln,
Speech Pathology*



ALEXIS BILLETER

Loomis High School — 2021

PCCF College Student Scholarship IMO Ivan
& LeonaBelle Kipp — \$1,500

*Southeast Community College Lincoln,
Education*



GRACE BORDEN

Holdrege High School — 2021

Curly Geer Scholarship — \$1,000
Holdrege Teammates Ray Ruybalid
Memorial Scholarship — \$1,000

Southeast Community College Beatrice, Ag



DALTON BREINIG

Loomis High School — 2022

Phelps County High Demand Jobs — \$6,000

*Central Community College Hastings,
Diesel Technology*



Scholarship Recipients 2022

KADEN BROEKER

Holdrege High School — 2022

Youth Golf Scholarship — \$1,500

*Northeast Community College,
Health Occupations*



GEORGIA CRANDALL

Loomis High School — 2022

Forrest & Violet Morrison
Leadership Scholarship — \$1,000

Bill Vandell Memorial
(Medical) Scholarship — \$300

Nebraska Wesleyan, Chemistry



KASSIDY DRAIN

Bertrand High School — 2019

Bernard & Edith Youngmark Scholarship — \$1,000
Dorothy Swanson Lewis Memorial Scholarship — \$1,000
Willis & Alice Holscher Scholarship — \$1,500
Gary W. Kaup Memorial Scholarship — \$1,000
Harvey E. & Marguerite Sandstrom McDowell — \$1,000
Lenore High Morrison Memorial — \$500
PMHC Service League — \$500
Otis E. & Dora P. Mundell Scholarship — \$5,000

Bryan LGH College of Health Sciences, Nursing



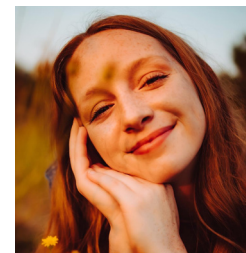
MCCARTNEY ELLIOTT

Holdrege High School — 2022

Phelps County High Demand
Jobs Scholarship — \$5,000

Vincent & Mildred Abrahamson
Memorial Scholarship — \$1,500

UNK, Pharmacy

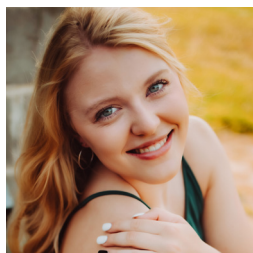


JOHANNA FORD

Bertrand High School — 2022

PCCF Scholarship Bertrand — \$1,500
Verner & Mildred Vinzant Scholarship — \$700
Ivan & LeonaBelle Kipp Scholarship — \$500
Arnold & Olive Wallander Memorial — \$2,000
Donald E. Sjogren Endowed — \$1,000

Oklahoma State University, Biochemistry



KAYNE GONZALEZ

Bertrand High School — 2022

Arnold & Olive Wallander
Memorial Scholarship — \$1,000

Verner & Mildred Vinzant Scholarship — \$700

Ivan & LeonaBelle Kipp Scholarship — \$500

*University of Michigan Ann Arbor,
Computer Science*

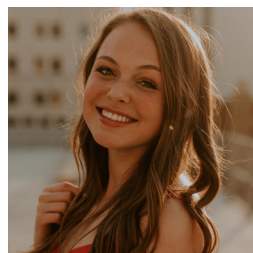


DELANEY HAM

Holdrege High School — 2022

DiAnn S. Harris Memorial Scholarship — \$1,000
Holdrege Rotary Scholarship — \$1,000
Bruce Hilsabeck Memorial Scholarship — \$500
Donald E. Sjogren Endowed Scholarship — \$1,000

UNO, Social Work

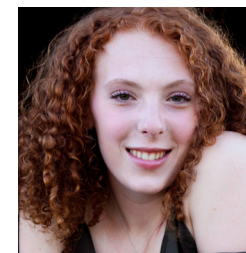


CARRIN GRAMKE

Minden High School — 2022

Humpert Memorial
Scholarship — \$10,000

UNO, Music



Scholarship Recipients 2022

ALEXI HENERY

Wilcox-Hildreth High School — 2021

Ron Lush Ag Scholarship — \$1,000

LaMonte Woollen Scholarship — \$1,500

J.L. Young Memorial Scholarship — \$500

*Southeast Community College Beatrice,
Agriculture*



HANNAH HENRY

Southern Valley High School — 2022

Clifton & Alberta White
Memorial Scholarship — \$15,000

Wayne State College



DANIEL HERMANSON

Loomis High School — 2022

Donald E. Sjogren Endowed Scholarship — \$1,000

Francis M. Ebmeier Scholarship — \$1,000

Harry & Evelyn Dahlstrom Scholarship — \$1,000

Mary Jean Anderson Memorial — \$1,000

PCCF Scholarship Loomis — \$1,500

Walter J. & Elsie E. Stark Memorial — \$500

UNL, Software Engineering



CAROLINE HILL

Holdrege High School — 2022

HHS Class of 1966 Scholarship — \$1,500

UNK, Interior Design



JORDAN HILMER

Bertrand High School — 2022

Arnold & Olive Wallander Memorial — \$1,000

Earl & Caroline High Scholarship — \$4,000

Emily Swenson Memorial Scholarship — \$20,000

Verner & Mildred Vinzant Scholarship — \$700

Northeast Community College, Ag Business



MAXWELL HUNTER

Holdrege High School — 2022

Holdrege Firefighters Scholarship — \$2,000

Vincent & Mildred Abrahamson
Memorial Scholarship — \$1,500

UNK, Computer Science



CHASE JOHNSON

Wilcox-Hildreth High School — 2022

BD Technical Education Scholarship — \$16,000

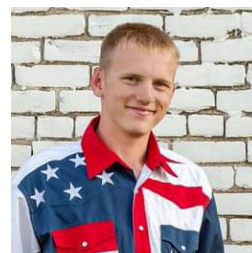
E.L. Lindsay Memorial Scholarship — \$500

J.L. Young Memorial Scholarship — \$500

Lamoine Johnson Retired Employee Sch. — \$500

Wilcox Area Community Foundation Sch. — \$500

CCC Hastings, Electro-Mechanical Technology



JEREMIAH JOHNSON

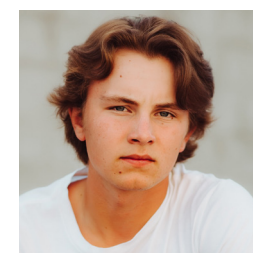
Holdrege High School — 2022

Braden Badertscher
Memorial Scholarship — \$1,000

Phelps County High Demand Jobs
Scholarship — \$4,000

Mike Lane Memorial Scholarship — \$500

UNK, Aviation



Scholarship Recipients 2022

KLOEY KIRWAN

Holdrege High School — 2020

Harold & Dorothy Marshall
Scholarship — \$1,000

UNL, Biology



JENNA KUCK

Bertrand High School — 2017

Willis & Alice Holscher
Scholarship — \$1,500

*Chadron State College,
Special Education*



NIKKI KNOELL

Holdrege High School — 2020

Clifford, Marian & Michael Barnes
Memorial Scholarship — \$10,000

UNK, English

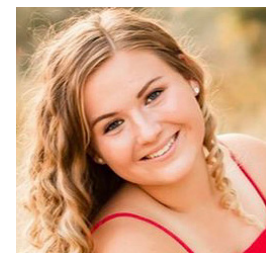


JENESSA LANDIN

Holdrege High School — 2021

Adam Harrahill Memorial Scholarship — \$1,000
Atlanta Community Club Scholarship — \$500
Marty Damrow Memorial Scholarship — \$500
Phelps County High Demand Jobs Scholarship — \$4,000

CCC Kearney, Nursing



KEEGAN LINDEN

Wilcox-Hildreth High School — 2022

J.L. Young Memorial Scholarship — \$500
Parker Sturgis Memorial Scholarship — \$1,000
Wilcox Area Community Foundation Sch. — \$500

CCC Hastings, Automotive



BAILEY LENNEMANN

Franklin High School — 2022

Humpert Memorial Scholarship — \$12,000

CCC Kearney, Nursing

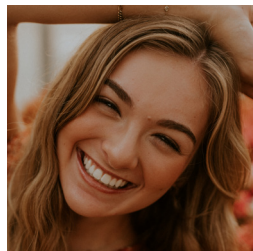


GRACE MALOLEY

Holdrege High School — 2022

HHS Class of 1966 Scholarship — \$1,500
Ray Ruybalid Memorial Scholarship — \$500
William & Margaret Richards
Scholarship — \$3,000

UNK, Business Admin./Management



HADLEY MILKS

Holdrege High School — 2020

Joan Titus Swan & Jane Waller Titus
Memorial Scholarship — \$1,000

*College of Saint Mary,
Kinesiology & Exercise Science*



Scholarship Recipients 2022

MARY MCDERMOTT

Holdrege High School — 2003
Patrick Family Scholarship — \$1,000
PCCF Nontraditional Student
Scholarship — \$1,500

Business Admin./Management



KEARA MILLER

Holdrege High School — 2019
Joan Titus Swan & Jane Waller
Titus Memorial Scholarship — \$1,000

Chiropractic



MADELYN MOORE

Holdrege High School — 2020
Joan Titus Swan & Jane Waller
Titus Memorial Scholarship — \$1,000

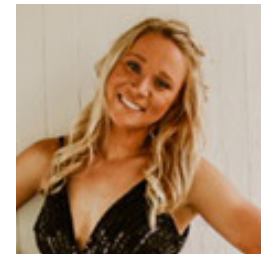
Wayne State College, Pharmacy



MCKENNA ORTGIESEN

Holdrege High School — 2022
Holdrege Memorial Homes Scholarship — \$1,000
Clive E. & Charlotte E. Lantz Scholarship — \$500

Nebraska Wesleyan, Nursing



KARLEY PATTERSON

Bertrand High School — 2021
Atlanta Community Club Scholarship — \$500

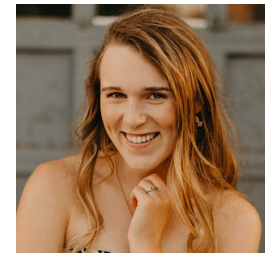
Chadron State College, Music



ANNA PELTON

Bertrand High School — 2021
Joan Titus Swan & Jane Waller
Titus Memorial Scholarship — \$1,000
Phelps County High Demand
Jobs Scholarship — \$6,000

Occupational Therapy



JOSEPH PELTON

Bertrand High School — 2022
Bill Vandell Memorial Scholarship — \$300

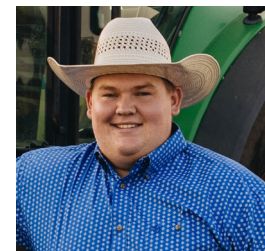
Agriculture



BRYCE PHILIPS

Bertrand High School — 2022
Phelps County High Demand
Jobs Scholarship — \$3,000

Northeast Community College, Agriculture



Scholarship Recipients 2022

CAMRYN POTTER

Holdrege High School — 2022

Humpert Memorial Scholarship — \$10,000

Rod Smith Educational Scholarship — \$1,000

James Van Marter Memorial Scholarship — \$1,950

Creighton University, Education



JOSHUA REED

Holdrege High School — 2021

Phelps County High Demand
Jobs Scholarship — \$3,000

*Southeast Community College Beatrice,
Agriculture*



LILLIE REED

Holdrege High School — 2022

Rodney E. Forsberg
Memorial Scholarship — \$2,000

UNK, Psychology

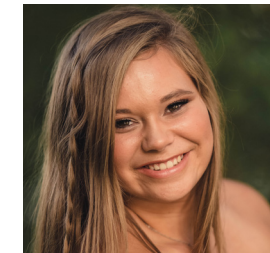


MCKINLEY RITNER

Wilcox-Hildreth High School — 2021

J.L. Young Memorial Scholarship — \$500

UNK, Early Childhood Education



JAYDEN ROBINSON

Axtell High School — 2021

BD Academic
Achievement Scholarship — \$16,000

Nebraska College of Technical Ag, Vet Medicine

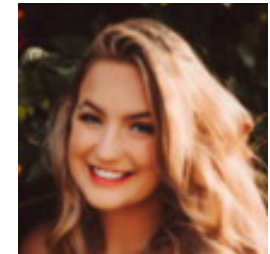


REYCLYN ROBISON

Holdrege High School — 2022

Donald E. Sjogren Endowed Scholarship Funk
Fridhem Lutheran Church Members — \$11,000

UNL, Psychology

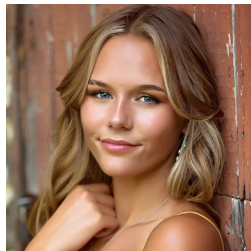


BRIANNA RUSSELL

Southern Valley High School — 2022

Orleans High School Scholarship — \$500

UNK, Graphic Design



In 2022, PCCF awarded **117** scholarships
totaling **\$281,500** to **53** students

PCCF Scholarship Applications open on
December 1 and are due **February 15.**

Scholarship Recipients 2022

EMILY RUTT

Franklin High School — 2020

Humpert Memorial Scholarship — \$13,000

UNK, Education



SAMANTHA SCHEMPER

Loomis High School — 2021

RoDonna Harden
Memorial Scholarship — \$500

UNK, Education

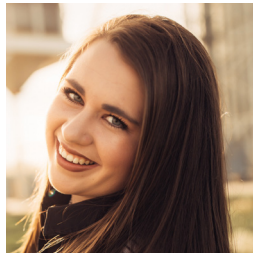


ABBY SCHOLZ

Bertrand High School — 2021

PCCF College Scholarship IMO
Ivan & LeonaBelle Kipp - Bertrand — \$1,500
PT Leland Gaffney Memorial — \$1,000
Roger D. Olson Ag Scholarship — \$500
Skallberg Family Scholarship — \$1,000

Agriculture



AARON STURTEVANT

Holdrege High School — 2022

Donald E. Sjogren Endowed Scholarship — \$1,000
HHS Class of 1966 Scholarship — \$1,500
Holdrege Rotary Scholarship — \$1,000
M.J. Nelson Science Scholarship — \$500
Vincent & Mildred Abrahamson
Memorial Scholarship — \$1,500

Mechanical Engineering



NOAH WILKE

Holdrege High School — 2020

Robert R. Johnson
Memorial Scholarship — \$1,000

UNL, Agriculture



ERIKA WILKINS

Holdrege High School — 2022

Holdrege Teammates Ron Uribe
Scholarship — \$1,000
Holdrege Teammates Scholarship — \$1,000
Holdrege Firefighters — \$2,000

Northwest Kansas Tech. College, Criminal Justice



OUR MISSION

The mission of the Phelps County Community Foundation is to encourage and provide opportunities for charitable giving, to manage and distribute funds in a responsible manner and to enhance the quality of life for people in Phelps County.

PCCF Staff



Kara Faber
Executive
Director



Lacy Chapman
Program
Officer



Patty Freburg
Administrative
Assistant



Coral Weeder
Program
Assistant



Cindy McCormick
Executive
Assistant



Tana Fye
Legal
Counsel

PCCF Board of Directors



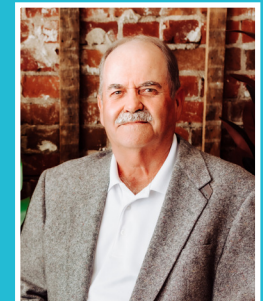
Tammy Vonasek
PRESIDENT



Carrie Trompke
VICE-PRESIDENT



Charles Reeser
TREASURER



Craig Philips
SECRETARY



Roger Peterson



Luke Thorell



Patti Simpson



Liz Mattson



Heather McQuillan



Richard Krohn



Cindy Collin



Lacie Westcott

Phelps County Community Foundation

424 Garfield | Holdrege, NE 68949 | 308-995-6847 | www.phelpsfoundation.org



Phelps County Community Foundation
424 Garfield Street
Holdrege, NE 68949

Current Resident Or



2022 give2GROW **THURSDAY** **NOVEMBER 17!**

**A SPECIAL DAY OF GIVING TO SUPPORT
PHELPS COUNTY CHARITIES!**

Online giving now open at give2growphelps.org

